

HL985A

WHEEL LOADER



Engine Power
430 HP (321 kW) 2100 rpm

Bucket Capacity
6.5 – 7.0 m³

Operating Weight
33800 kg

HL985A SPECIFICATIONS

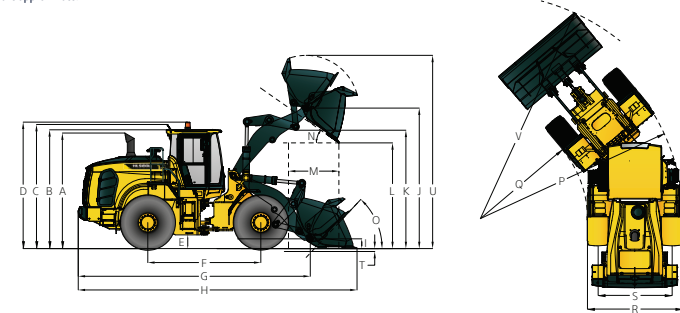
SPECIFICATIONS		HL985A
ENGINE		
Manufacturer / model	CUMMINS / X12 EU Stage V	
Type	6 cylinder, water-cooled, 4-cycle, waste gate turbocharged, charge air cooled, direct injection, common rail, electronic controlled diesel engine	
Aftertreatment system	DOC, DPF, SCR, without EGR	
Gross power (SAE J1995)	321 kW (430 HP) at 2100 rpm	
Net power (SAE J1349)	313 kW (420 HP) at 2100 rpm	
Max. power	353 kW (473 HP) at 1700 rpm	
Peak gross torque (SAE J1995)	2300 Nm at 1400 rpm	
Displacement	11.8 l	
No. of cylinders	6	
Bore × stroke	132 mm x 144 mm	
Compression ratio	17:1	
Air cleaner	Dry, two stage dual elements	
Alternator	28 V - 110 Amp	
Battery	2 x 12 V, 220 Ah	
Starting Motor	24 V - 75 kW	
Fan	LS regulated, hydraulic driven fan with manual/ automatic reversal self-cleaning system	
- The indicated net power is available for the flywheel when the engine is equipped with a fan, alternator, air cleaner, and after-treatment device. - The indicated gross power is obtained with the fan at maximum speed.		
TRANSMISSION		
Manufacturer / model	ZF / 5WG310	
Transmission type	Full automatic power shift, countershaft type with soft-shift in range and direction. Properly matched torque converter to engine and transmission for excellent working ability.	
Torque converter type	3-Elements, single-stage, single phase, lock up clutch	
Travel speed		km/h
Forward	1st	6.2
	2nd	11.9
	3rd	18.5
	4th	27.1
	5th	40.0
Reverse	1st	6.2
	2nd	11.9
	3rd	27.1
This is the maximum travel speed of a standard machine with unfilled bucket.		
AXLES		
Drive system	Four-wheel drive system	
Hub reduction	Planetary reduction at wheel end	
Reduction ratio	27	
Front axle		
Manufacturer / model	ZF / MT-L3135II	
Differential	Auto diff lock 100% lock ratio	
Rear axle		
Manufacturer / model	ZF / MT-L3135II	
Differential	Conventional 0% lock ratio	
Oscillating	±11 degrees	
TYRES		
Type	Tubeless, loader design tyres	
Standard	Triangle	875/65R29 L3 ★★
Option	Triangle	295 R25 L3 ★★
BRAKES		
Service brakes	Hydraulically actuated, wet disc brakes actuate all 4 wheels, independent axle-by-axle system. Self adjusting, wheel speed brake	
Parking Brake	Spring-applied, hydraulically released brake	
Emergency brake	When brake oil pressure drops, indicator light alerts operator and parking brake automatically applies.	

SPECIFICATIONS		HL985A
HYDRAULIC SYSTEM		
Manufacturer pump / MCV	KPM Flutec / Parker	
Type	Load sensing hydraulic system	
Maximum pump output	520 ℓ/min at 2100 rpm	
Maximum operating pressure	315 bar	
Main control valve	2 Spool (boom, bucket)	
	3 Spool (boom, bucket, aux) (option)	
Lift circuit	The valve has four functions: Raise / hold / lower / float Adjustable automatic kickout from horizontal to full lift and loading position.	
Tilt circuit	The valve has three functions: Tilt back / hold / dump Adjustable automatic bucket positioner to desired load angle	
Hydraulic cycle time with rated payload	Raise, from carry position	6.1 Sec
	Dump, at maximum raise	1.7 Sec
	Lower, empty, float down	4.3 Sec
	Total	12.1 Sec
Cylinder	Type	double acting
	No. of cylinders-bore × stroke	
	Lift	2 - 190 × 890 mm
	Tilt	1 - 210 × 550 mm
STEERING SYSTEM		
Manufacturer steering unit / valve	Danfoss	
Type	Load sensing hydrostatic articulated steering	
Pump	Variable displacement piston pump	
Rated oil quantity	280 ℓ/min	
System pressure	210 bar	
Cylinder	Double acting 2 - 110 × 460 mm	
Steering angle	40° to both, right and left angle, respectively	
Features	Center-point frame articulation Tilt and telescopic steering column	
CABIN		
ROPS / FOPS cabin meet ISO 3471 and ISO 3449		
SOUND		
Guaranteed noise level presented below can be differed depending on a range of factors such as operating condition, speed of a cooling fan, types of engine and so forth. Hearing protection shall be necessary if an operator is working in the improperly maintained cabin or exposed to a noisy environment by leaving doors and/or windows open.		
With cooling fan speed at maximum value		
Operator Sound Pressure Level (ISO 6396:2008)	70 dB(A)	
Exterior Sound Power Level (ISO 6395:2008)	109 dB(A)	
* Distance of 15 m, moving forward in second gear ratio		
AIR CONDITIONING SYSTEM		
The air conditioning system contains fluorinated greenhouse gas refrigerant R134a (Global Warming Potential = 1430). The system contains 0.75 kg of refrigerant representing a CO ₂ equivalent of 1.0725 metric tonnes.		
SERVICE REFILL CAPACITIES		
Unit	L	
Fuel tank	440	
DEF tank	49	
Cooling system	46	
Crankcase	34	
Transmission	56	
Front axle	71	
Rear axle	69	
Hydraulic tank	200	
Hydraulic system (Including tank)	360	

HL985A DIMENSIONS & WORKING RANGE

HL985A DIMENSIONS

All dimensions are approximate.



Unit: mm

A	Height to top of exhaust pipe	3715
B	Height to top of cabin	3865
C	Height to top of product link antenna	3905
D	Height to top of warning beacon	3995
E	Ground clearance	487
F	Wheelbase	3800
G	Overall length (without bucket)	8465
H	Shipping length (with bucket level on ground)	10000
I	Hinge pin height at carry position	540
J	Hinge pin height at maximum lift	4750
K	Lift arm clearance at maximum lift	4010
L	Dump clearance at maximum lift and 45° discharge	3360

M	Reach at maximum lift and 45° discharge	1550
N	Dump angle at maximum lift and dump (on stops)	48
O	Roll back angle ground	42
	Roll back angle carry	47
P	Clearance circle (diameter) to outside of tyres	14400
Q	Clearance circle (diameter) to inside of tyres	7560
R	Width over tyres (unloaded) / Overall width (bucket)	3420 / 3600
S	Tread width	2540
T	Digging depth LLB01-LLB06 / LLB46	115 / 135
U	Overall height with bucket at maximum lift LLB01 / LLB06-LLB46	6740 / 6780
V	Loader clearance circle with bucket at carry position LLB01 / LLB06 / LLB46	15750 / 15930 / 16110

OPERATING SPECIFICATIONS WITH BUCKETS

Linkage Bucket Type		General Purpose		
Mounting		Pin On	Pin On	Pin On
Edge Type		Bolt-on cutting edge	Bolt-on cutting edge	Bolt-on 2 piece tooth & segments
Sales code		LLB01	LLB06	LLB46
Bucket weight (empty)	kg	3080	3360	3490
Capacity - Rated	m ³	6.5	7.0	7.0
Capacity - Rated at 110% Fill Factor	m ³	7.2	7.7	7.7
Width	mm	3600	3600	3600
Dump clearance at maximum lift and 45° discharge	mm	3360	3145	2995
Reach at maximum lift and 45° discharge	mm	1550	1760	1885
Digging depth	mm	115	115	135
Shipping length (with bucket)	mm	10000	10300	10495
Overall height with bucket at maximum lift	mm	6740	6780	6780
Loader clearance circle with bucket at carry position	mm	15750	15930	16110
Static tipping load, straight (no tyre deflection)	kg	26500	25050	24850
Static tipping load, articulated (no tyre deflection)	kg	22950	21700	21500
Breakout force	kg / kN	28400 / 279	23800 / 233	23800 / 233
Operating weight*	kg	33800	34080	34210

* All height and tyre related dimensions are with standard 875/65 R29, L3 radial tyres

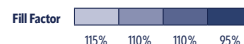
HL985A

DENSITY AND BUCKET SELECTION

DENSITY OF OPERATING MATERIALS			
Loose Material		Material Density [ton / m ³]	possible fill factor [%]*
Earth / Clay		1.5 - 1.7	~110
Sand and Gravel		1.5 - 1.7	~105
Aggregate	25 - 76 mm	1.6 - 1.7	~100
	19 mm and larger	1.8	
Rock		~ 1.7	~<100

*as a percentage of the rated capacity
The bucket size must be chosen based on the density of the material and the expected fill factor.
For optimum stability always consult the bucket selection chart.

HL985A BUCKET SELECTION CHART													
Standard lift arm - General purpose bucket - standard counterweight 2600kg													
Size in m ³	GET type	Mounting type	Option code	Material Density [ton / m ³]									
				1.1	1.2	1.3	1.4	1.5	1.6	1.7	1.8	1.9	2.0
6.5	Bolt-on cutting edge	Pin on	LLB01				7.5 m ³						6.2 m ³
70	Bolt-on cutting edge	Pin on	LLB06		8.1 m ³						6.7 m ³		
70	Bolt-on 2 piece tooth & segment	Pin on	LLB46		8.1 m ³						6.7 m ³		
Standard lift arm - General purpose bucket - heavy counterweight 3500kg													
Size in m ³	GET type	Mounting type	Option code	Material Density [ton / m ³]									
				1.1	1.2	1.3	1.4	1.5	1.6	1.7	1.8	1.9	2.0
6.5	Bolt-on cutting edge	Pin on	LLB01					7.5 m ³					6.2 m ³
70	Bolt-on cutting edge	Pin on	LLB06			8.1 m ³						6.7 m ³	
70	Bolt-on 2 piece tooth & segment	Pin on	LLB46			8.1 m ³						6.7 m ³	



CHANGE IN OPERATING SPECIFICATIONS - TYRES		
Tyres		29.5R25 L3 ★★
Operating weight	kg	-815
Static tipping load, Straight (no tyre deflection)	kg	-600
Static tipping load, Articulated (no tyre deflection)	kg	-510
Vertical height changes	mm	-1
R. Width over tyres (unloaded)	mm	-230
P. Clearance circle (diameter) to outside of tyres	mm	-115
Q. Clearance circle (diameter) to inside of tyres	mm	+115

** Dimension changes compared to 875/65 R29, ★★, L3 radial tyres

CHANGE IN OPERATING SPECIFICATIONS - COUNTERWEIGHT		
Counterweight 3500kg		LCW12
Operating weight	kg	+900
Static tipping load, straight (no tyre deflection)	kg	+2300
Static tipping load, articulated (no tyre deflection)	kg	+2000
Overall length (without bucket)	mm	+105
Shipping length (with bucket level on ground)	mm	+105

**dimension changes HL985A with heavy counterweight option compared to std counterweight

HL985A

STANDARD/OPTIONAL EQUIPMENT

CAB & INTERIOR	STD/OPT	CAB & INTERIOR	STD/OPT
ALARMS, AUDIBLE AND VISUAL		IGNITION	
Emergency warning	•	Key	•
Engine coolant temperature	•	Button "Smart-key" (anti-theft system)	□
Transmission oil temperature	•	Anti-theft system (code)	•
Hydraulic oil temperature	•	Auto engine shut down function	•
Fuel level	•	SWITCHES	
Transmission fault	•	Hazard	•
Air filter clogging	•	DPF	•
Engine oil pressure	•	Parking brake	•
Steering oil pressure	•	FNR shifter	•
Battery charging	•	Emergency steering test	•
Brake oil pressure	•	Pilot cut-off	•
Engine check	•	Air compressor	□
Engine stop	•	Differential lock	•
Engine coolant level	•	Differential lock foot switch	□
Water in fuel	•	Gear select lever	•
Exhaust system cleaning	•	Multi function switch (front wiper, washer, horn, etc.)	•
Exhaust system cleaning inhibit	•	Battery master switch	•
High exhaust system temperature	•	Engine hood open	•
DEF level	•	MONITOR	
SCR system fault	•	7-inch, colour, capacitive touchscreen	•
Seat belt fastened	•	Multi language (selectable)	•
GAUGES		Multi user (personal settings)	•
Engine coolant temperature	•	Hyundai weighing system (control / USB data export)	•
Fuel level	•	Eco gauge & report	•
Speedometer	•	Adjustable access levels (PW protection)	•
Transmission oil temperature	•	E-operator manual	•
INDICATOR LIGHTS		MEMBRANE SWITCHES	
High beam	•	Main light	•
Parking brake	•	Work light	•
FNR pilot lamp	•	Beacon light	□
Joystick steering pilot lamp	•	Auto grease	□
Differential lock	□	Auto position (boom / bucket)	•
Pilot cut-off	•	Fine modulation	•
Turn signal	•	Quick coupler	□
Warming up	•	Ride control	•
Preheating	•	Weighing system	•
Engine auto stop	•	Rear wiper & washer	•
Clutch cut off	•	Mirror defrosting	•
Float mode	•	Rear view camera activation	•
Ride control	•	CABIN	
Fan reverse indicator	•	ROPS (ISO 3741) / FOPS (ISO 3449) structure	•
Torque converter lock up	•	Cab pressurized, sound suppression	•
Fuel warmer	•	Interior rear view mirror	•
LCD DISPLAY		Dual exterior rear view mirrors (main mirror electric adjustable and heated)	•
Clock and fault code	•	Foldable mirror stay	•
Operating hour counter	•	Wiper and washer, front and rear (interval function)	•
DEF level	•	Steering wheel, tilt and telescopic	•
Engine rpm	•	Steering wheel with knob	•
Transmission gear range indicator	•	Roller type sunshade (front window)	•
Job time and distance counter	•	Roller type sunshade (rear window)	□
Temperature (coolant, hydraulic oil, T/M oil)	•	Tinted safety glass	•
LIGHTING SYSTEM		Sliding window (lockable, left and right)	•
LED interior light	•	LH front hinged door	•
2 stop and tail lights	•	Remote cabin door un- / locking, opening	□
2 stop and tail lights (LED)	□	Radio / USB Player / hands-free mobile	•
4 turn signal lights	•	Rubber floor mat	•
2 head lights on front frame	•	Wrist rest	•
2 head lights on front frame (LED)	□	24V to 12V DC converter (20 A) with power outlet	•
2 working lights on front roof	•	AUTOMATIC CLIMATE CONTROL	
4 working lights on front roof, 2 working lights on rear roof	□	Air conditioner & heater (full automatic)	•
4 working lights on front roof, 2 working lights on rear roof (LED)	□	Defroster function	•
2 working lights on rear grill	•	2-stage cabin air filtration	•
2 working lights on rear grill (LED)	□		
1 number plate light on rear grill	•		
1 beacon lamp magnetic, detachable (LED)	□		

HL985A STANDARD/OPTIONAL EQUIPMENT

CAB & INTERIOR	STD/OPT
SEAT	
Air suspended, heated	•
4-way adjustable, seat mounted armrest	•
PERSONAL STORAGE SPACE	•
Console box	•
Magazine pocket	•
Cup holder	•
Coat hook	•
PEDALS	
Single brake pedal	•
Dual brake pedal	□
Accel pedal	•
ENGINE	STD/OPT
Alternator, 28V, 110A	•
Batteries 2 x 220 Ah / 2 x 12 V	•
ENGINE, STAGE V	•
CUMMINS, XT2	•
Cold start system (pre-heater)	•
Engine mode (eco, power smart, power)	•
Engine fuel priming pump	•
Fuel / water separator with water-in-fuel indicator	•
Steel fuel tank	•
Fuel fill strainer	•
DEF fill strainer	•
Engine air pre-cleaner	•
Centrifugal air pre-cleaner	□
Radiator, wide core, stacked	•
Regulated, hydraulic driven, auto reversible fan	•
Fan guard	•
Fuel warmer (integrated in fuel filter)	•
Hyundai long life coolant	•
Coolant level sight gauge	•
Engine oil level dipstick gauge	•
Engine enclosure, lockable	•
CLEAN EMISSION MODULE	
DOC, DPF and SCR, no EGR	•
POWER TRAIN	STD/OPT
TRANSMISSION	
Transmission: computer controlled, electronic soft shift, auto-shift modes, clutch cut-off modes, kick-down features included	•
Torque converter	•
Transmission F5 / R3 with lock-up clutch	•
Transmission oil level sight gauge	•
Transmission oil cooler with thermostat	•
Axle cooling system (front and rear)	•
Travel speed limiter (20-40 km/h adjustable)	•
FRONT AXLE	
Heavy duty axle & hydraulic lock differential	•
REAR AXLE	
Heavy duty axle & open differential	•
BRAKING SYSTEM	
Dual brake circuit	•
Service brake (fully enclosed multi-plate wet disc)	•
Wheel speed brake	•
Parking brake (calliper on transmission output shaft, spring applied, pressure released)	•
TYRES	
875/65 R29, Triangle T8598 ★★, L3	•
29.5 R25, Triangle T8516 ★★, L3	□

HYDRAULIC SYSTEM	STD/OPT
MCV 2 circuits (boom, bucket)	•
MCV 3 circuits (boom, bucket, aux)	□
Boom float position	•
Boom holding valve	•
EH Control (joystick), RH armrest mounted	•
EH Control (fingertip), RH armrest mounted	□
EH steering joystick, LH armrest mounted	□
Boom kick-out, automatic, lower and upper position	•
Bucket positioner, automatic	•
Soft end stop (cylinder end stroke dampening)	•
Aux circuit flow setting (15 steps)	□
Fine control	•
Bucket over boom priority (selectable)	•
Ride control system	•
Extra piping for auxiliary function	□
Quick coupler piping	□
Hydraulic oil cooler	•
Hydraulic oil level sight gauge	•
Hyundai long life hydraulic oil ISO VG46	•
Hyundai long life hydraulic oil ISO VG32	□
Hyundai bio hydraulic oil (HBHO)	□
OTHER	STD/OPT
ATTACHMENT	
Loader linkage, sealed	•
Z-bar std lift frame	•
6.5m ³ bucket, cutting edge, bolt-on type	□
70m ³ bucket, cutting edge, bolt-on type	□
70m ³ bucket, tooth & segments, bolt-on type	□
OTHER	
Standard counterweight (2600kg)	•
Heavy counterweight (3500kg)	□
Drawbar with pin	•
Lift and tie-down eyes	•
Vandalism protection cap locks	•
Customized paint	□
ACCESSIBILITY	
Handrails (left, right)	•
Ladders (left, right)	•
Platforms (left, right, front frame)	•
Steps (left, right, front frame, engine)	•
Door and cabin locks, one key system	•
Doors, service access (locking)	•
Doors, service access (remote control)	•
SERVICE & MAINTENANCE	
Ground level access refilling (fuel + DEF)	•
Ground level access lubrication points	•
1 piece, electrical opening engine hood	•
Swing-out cooler (AC, hydraulic oil)	•
Grouped filters	•
Remote fluid drain ports	•
Tool box, lockable	•
Air compressor (gun inside cabin)	□
Diagnostic pressure taps	•
Auto grease system	□
GUARDS	
Fenders (front / rear)	•
Mud guard rear	•
Transmission	•
Cabin guard (front / rear)	□

HL985A STANDARD/OPTIONAL EQUIPMENT

SAFETY	STD/OPT
Emergency engine shut-off switch	•
Emergency steering	•
Rear view camera (on main monitor)	•
AAVM (AVM + IMOD)	□
Second monitor (rear camera, AAVM, radar)	□
Radar	□
Back-up alarm	•
Horn, electric	•
Articulation locking bar	•
Wheel chocks	•
SAFETY	STD/OPT
Hi MATE (mobile communication, 5y subscription)	•
ECD (Engine Connected Diagnostics)	•

- Standard
- Optional
- Not available

* Standard and optional equipment may vary. Contact your Hyundai dealer for more information. The machine may vary according to International standards.
 * The photos may include attachments and optional equipment that are not available in your area.
 * Materials and specifications are subject to change without advance notice.



HYUNDAI



HD Hyundai Construction Equipment Europe nv, Hyundailaan 4,
3980 Tessenderlo, Belgium. Tel: +32 (0) 14 56 22 00

Specifications and design are subject to change without notice.
Pictures of HD Hyundai Construction Equipment Europe products may
show other than standard equipment.



Scan to find out more
about this product.

READY TO CHANGE YOUR WORLD?

Contact your HD Hyundai dealer.
hyundai-ce.eu/en/dealer-locator

HY-CE-00528.10/2024. EN. ISSUE 1