

WHEEL LOADER
HL975A CVT



READY TO CHANGE YOUR WORLD

The HL975A CVT Wheel Loader is part of Hyundai's brand new A-series:

a fresh generation of construction equipment that complies with the European Stage V emission levels. But it goes much further than that! While fulfilling regulatory demands, Hyundai aimed for a ground-breaking level of customer satisfaction with maximum performance and productivity, better safety, more convenience and improved uptime management.

From its robust exterior design to its performance-enhancing smart technologies, the HL975A CVT opens up a world of new possibilities where tiny efforts move mountains. It's time to experience the Hyundai Effect!



Productivity & Efficiency

CVT: MAXIMISING PRODUCTIVITY AND FUEL EFFICIENCY IN TOUGH WORKING CONDITIONS

The HL975A CVT is powered by a robust Stage V-certified Cummins X12 engine combined with a ZF Continuously Variable Transmission (CVT). A range of new technologies have been integrated to enhance fuel efficiency, keep harmful emissions to a minimum and deliver the power you need for heavy-duty work in extreme conditions.



Engine

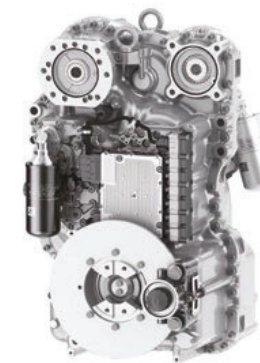
The Cummins X12 engine meets European Stage V emissions requirements and is designed for maximum productivity and fuel savings. Like all A-Series machines, the HL975A CVT features our all-in-one exhaust aftertreatment system which cuts emissions and operating costs. By removing the need for EGR, this also enhances reliability and simplifies maintenance.



Why choose CVT?

The state-of-the-art ZF CVT-transmission offers optimised power matching, continually changing the ratios of hydraulic to mechanical energy (depending on load and speed) to keep the engine in a low rpm range and offer smooth, seamless acceleration. During deceleration, the CVT acts as a brake, reducing wear on the service brake and prolonging the life of the axle oil.

A range of new electronically controlled operating modes allow operators to tailor machine performance for maximum efficiency on any job.



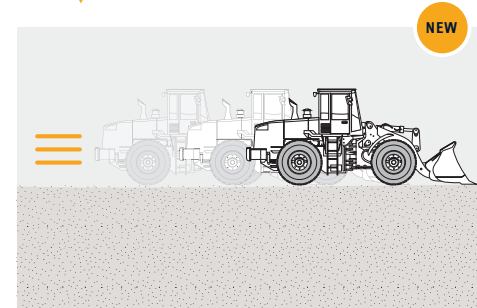
Traction Mode

The adjustable traction control system contributes to highly efficient job cycles while also minimising tire slip and effectively reducing wear.



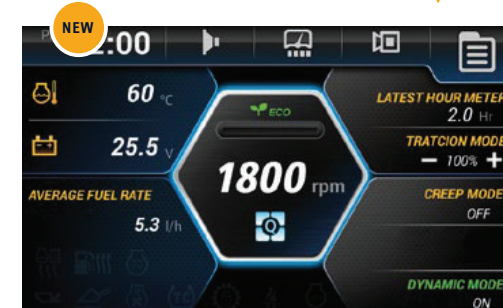
Creep Mode

This mode enables the machine to stay in slow driving motion when FWD/ REV gear is selected. It assists the operator when precise travelling is needed.



Dynamic Mode

In most applications, the CVT only requires a low engine rpm. The Dynamic Mode allows the operator to use full engine power up to 1800 rpm for even faster job cycles.



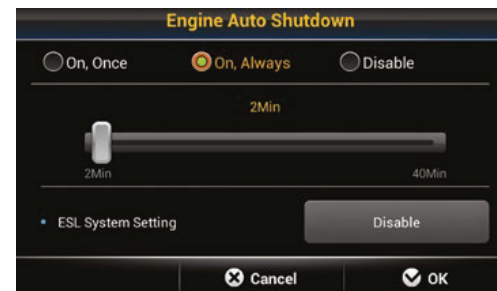
Productivity & Efficiency

PRECISE OPERATION FOR SMOOTH, EFFICIENT PERFORMANCE

Precise operating systems help you to get the most out of this mighty machine, including optimised power matching for the ultimate balance of torque and RPM. Compared to conventional transmission, the Powerline concept can deliver fuel savings of up to 30%, depending on the application, as well as smooth performance in high-load work like digging. Hyundai's proprietary weighing system technology is integrated as standard. Additional control, monitoring and maintenance features help you to optimise performance and productivity every single day, on any worksite.

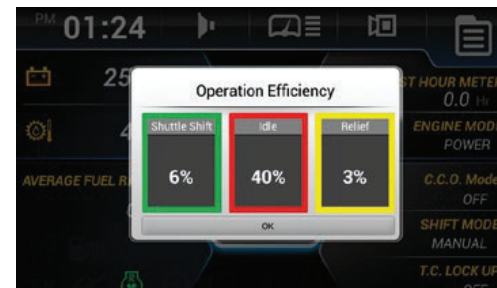
Automatic engine shutdown

The engine shuts down automatically when the machine is at rest to cut fuel consumption and prevent unnecessary emissions. Different operating modes and idling times can be selected according to the work environment, further enhancing efficiency.



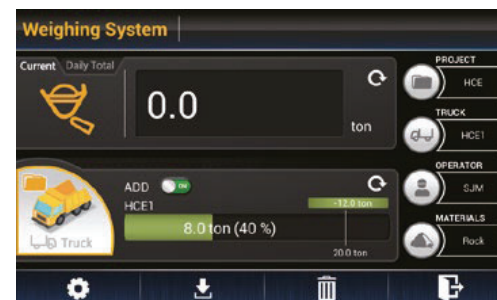
Eco Report

The Eco Report feature makes it easy for operators to develop efficient working habits by displaying real-time information about machine performance.



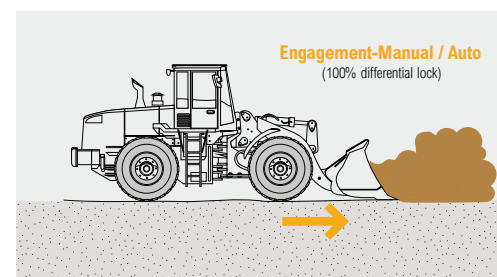
Weighing system

The highly accurate automatic/manual cumulative weighing system helps you to manage production more efficiently in any environment. For maximum precision and follow-up, a dedicated weighing screen can be displayed on the main monitor. The display includes weighing error icons for effective operator support.



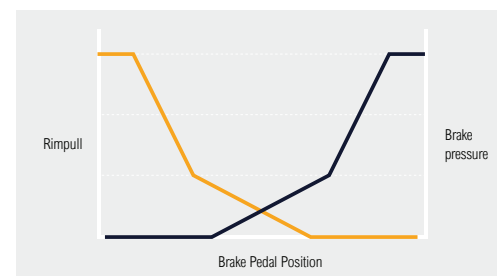
Hydraulic differential lock

A hydraulic locking differential prevents tyre slip for more secure operation as well as better productivity and fuel economy.



Inching brake pedal

The inching brake pedal applies the right amount of braking power while optimising the engine speed in various operating conditions and reducing wear on the brake discs.



Durability

TOUGH AND DURABLE FOR A RELIABLE RETURN ON YOUR INVESTMENT

To protect your business, you need to know that the investment you make today will sustain your profits over the long term. That's why we prioritised durability throughout the development of the HL975A CVT, from design and manufacturing to quality control. The axles, driveshaft and power split CVT system have been optimised for endurance and tested rigorously on a range of work sites. The result is a robust, reliable workhorse that minimises downtime for repairs and maintenance and helps you to protect your profits.



"The new power split CVT system was designed, built and tested for rock-solid reliability."

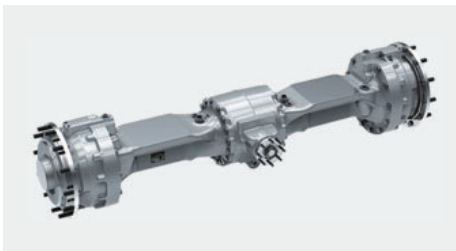
Hydraulic hoses

High-grade hoses with outstanding resistance to heat and pressure provide maximum durability, even in rough working conditions.



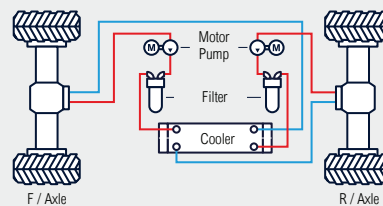
Premium quality axles

The HL975A CVT features premium quality axles with enhanced load capacity and sintered brake discs for better reliability and durability.



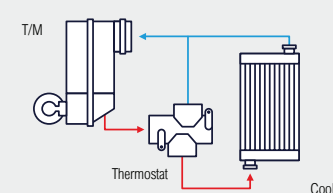
Axle oil cooling system

A separate axle oil cooling system is available as an option to prevent overheating during high-load work or tasks requiring frequent braking.



Thermostat for transmission cooling

The HL975A CVT is equipped with a thermostat for transmission oil cooling. This feature helps to warm up the fluid quickly and always keeps it at the optimal working temperature, protecting components and increasing efficiency.



Operator Comfort

A CABIN DESIGNED AROUND YOU

The HL975A CVT cabin was designed to be a productive, stress-free working environment that fits every operator perfectly. Comfortable and spacious, it features state-of-the-art noise and vibration reduction technology, achieving a sound level of only 70 dB, one of the lowest in this machine category. The high-quality, adjustable seat provides comfortable reach to all controls. A range of technologies enable easier machine monitoring, while the audio system includes a Bluetooth radio with USB and AUX input to keep you entertained during your working day.



Adjustable seat and armrest

The HL975A CVT has a large, comfortable air suspension seat with heating as standard. The seat and armrest are fully adjustable for added comfort.



Remote door control

As an option, the cabin door can be opened remotely for added convenience and safety.

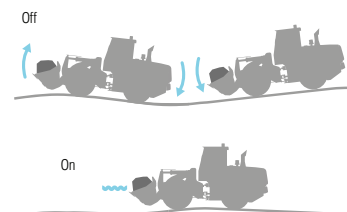


Air compressor

An optional air compressor can be mounted in the cabin to help operators keep their workspace pleasant and comfortable.

Ride control system

A ride control system with a piston accumulator reduces pitching of the wheel loader body and bucket for more stable and comfortable operation. It also minimises spillover, adding to convenience and productivity.



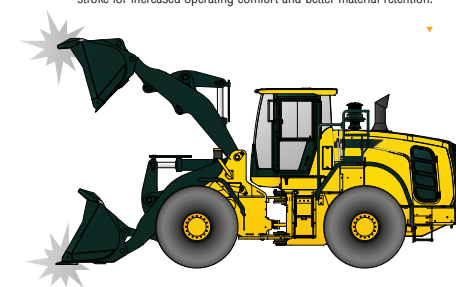
Touchscreen monitor

The instrument panel is optimised to provide quick, easy access to machine status information as you work. It features a seven-inch touchscreen monitor for excellent legibility. You can connect your Android™ mobile device through Miracast™.



Soft end stop

The soft end stop function reduces the hydraulic speed of the cylinder as it reaches the end of its stroke. This lessens the shock load of the stroke for increased operating comfort and better material retention.



Instrument cluster

All the indicators displaying machine status are centralised in one cluster to enable easy, efficient control.



Safety

CREATING A SAFE WORKING ENVIRONMENT

Details can make a huge difference when it comes to safety, especially if you're working in rough conditions. It's not just a matter of complying with rules. The HL975A CVT's safety features are designed and tested to meet your needs in the real world, even offering an extra pair of eyes with the optional All-Around View Monitoring (AAVM) and radar systems. Operating confidence is improved by technologies that provide a feeling of stability and smooth performance in high-load work. By helping to ensure a calm, accident-free worksite, this wheel loader adds to the productivity and peace of mind that are all part of the Hyundai Effect.



Advanced Around View Monitoring (AAVM) and Intelligent Moving Object Detection (IMOD)

The optional Advanced Around View Monitoring (AAVM) system gives you a 360° overview of your immediate working environment. It also includes Intelligent Moving Object Detection (IMOD) technology that senses and warns you when people or objects come within five metres of the machine.



Emergency stop switch

The engine can be shut down immediately using an emergency stop switch located at the base of the seat.

"For such a tough-looking machine, its performance is surprisingly smooth. It gives me extra confidence and a feeling of safety in any conditions."



Seat belt warning alarm

Operators are reminded to fasten their safety belt by an audible and visible alarm.

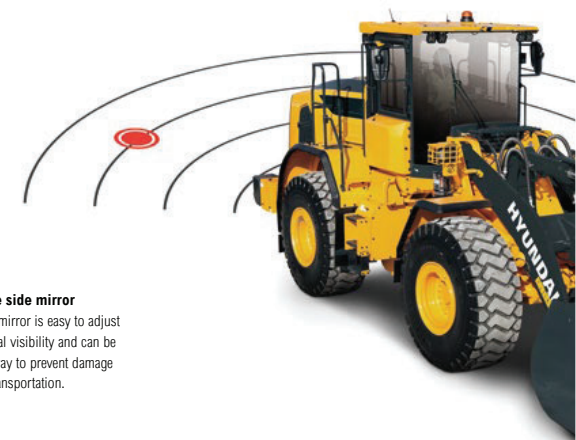
Radar system

The optional radar system detects obstacles behind the machine day and night, with no blind spots. The distance between the obstacle and the loader is displayed on the secondary monitor.



Foldable side mirror

The side mirror is easy to adjust for optimal visibility and can be folded away to prevent damage during transportation.



Serviceability & Connectivity

ADVANCED DIAGNOSTICS AND SERVICING SUPPORT

The peace of mind that comes with quick, low-effort servicing is also part of the Hyundai Effect. The HL975A CVT is designed to make maintenance as convenient as possible. The engine hood opens wide to provide easy access for cleaning and routine tasks. All components and materials have been optimised to ensure a long, trouble-free life. Hyundai's innovative Hi MATE telematics system enables full monitoring of machine activity and performance. Maximum connectivity is integrated to help you create a smart construction site and protect your profitability.

"New smart technologies have been added to make it easier to keep track of maintenance and get extra support if necessary."



Auto greasing system

With the optional auto greasing system, grease is applied to lubrication points automatically when needed. The correct dosing is ensured and lubricant is applied uniformly, reducing grease consumption and eliminating waste.



Engine hood

The tilt-back engine hood is fully retractable and can be opened electrically for easy access to the sealed engine room and cooling room. The engine room is designed to prevent the possibility of fire caused by the inflow of foreign materials.



Airco filters

The air conditioning uses a 2-stage filtration system allowing easy replacement of the filters.



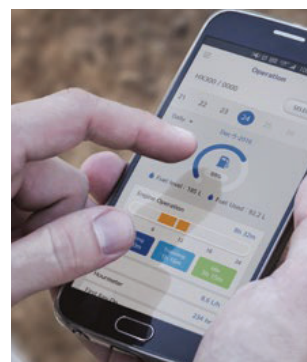
Cooling system

The HL975A CVT has dependable wide-core and fin coolers that prevent performance degradation caused by contamination. On top it is equipped with a regulated, automatic/ manual reversible fan.

HiMATE

Boost efficiency and performance

For maximum convenience and security, the HL975A CVT features Hyundai's exclusive Hi MATE remote fleet management system, which uses mobile data technology to provide the highest level of service and support. You can monitor your equipment wherever you are via a dedicated website or mobile app, with access to working parameters like total engine hours, machine utilisation, actual performed working hours, fuel consumption and machine location.



ECD (Engine Connected Diagnostics)

ECD provides troubleshooting advice as well as tailored servicing and parts support from Cummins Quick Serve. Service technicians are supported with remote diagnostics reports allowing them to prepare for site visits and bring the right tools.

We're all connected!



Just 5 minutes



One-stop solution



Increase productivity

By providing information such as service hours, idle time and fuel consumption, Hi MATE saves you money and improves productivity. Service alerts enable better maintenance planning.



Monitor your machines

Hi MATE's real-time location information allows better, more convenient monitoring of your equipment. Just log onto the Hi MATE website or mobile app to see your machines at any time, from any location. Receive data online, by e-mail or directly on your mobile device.



Improve security

Protect your equipment from theft or unauthorised usage. Hi MATE's geofencing alerts notify you automatically when a machine leaves a predetermined zone.

Parts & Warranties

HYUNDAI GENUINE PARTS AND WARRANTIES: THE BEST WAY TO PROTECT YOUR INVESTMENT

Hyundai Genuine parts, accessories and warranty programmes are specially designed to keep your machine covered. They increase uptime and maintain the performance, comfort, and convenience that are built into your equipment.



A network you can rely on

Hyundai Construction Equipment Europe prioritises quick, reliable intervention to keep your equipment running reliably. In the 13000 m² warehouse, Hyundai covers over 96% of all Genuine Parts. With one of Europe's most advanced automated warehousing systems, we are able to maintain availability and efficient delivery of all our Genuine Parts. Moreover, we guarantee a 24-hour delivery service across our European dealer network.



Fuel filters

Hyundai fuel filters provide the right degree of filtration to keep your engine clean. They are designed to meet and exceed the engine manufacturer's prerequisites for water separation and dirt filtration, prolonging the life of your engine.



Hyundai Genuine parts

Hyundai Genuine parts have the same design as those installed when your machine left the factory. They are subjected to rigorous quality inspections and tests to make sure they meet Hyundai's strict requirements for quality and durability. As well as minimising downtime, this helps to ensure peak performance on every task.



Aftermarket kits

You can order Hyundai aftermarket kits via your dealer. This AAVM system for example, improves safety in and around your working environment at all times.



Hyundai warranties

Our warranties are also designed to give you the cover you need to build your business with confidence and peace of mind.

Standard warranties

We offer standard warranty coverages for all wheel loaders. Next to this standard coverage, optional and extended warranty periods are available, so you can benefit from full warranty coverage for longer, and even over the full lifetime of the machines. Please discuss the optimal solution for your needs with your local Hyundai dealer.

Extended warranties

Our extended warranties help you maintain full control over your operating costs. If you combine an extended warranty programme with a tailored maintenance contract, you can completely avoid unexpected costs.

Walk-around

HL975A CVT

Productivity & Efficiency

- Continuously Variable Transmission (CVT) **NEW**
 - Traction Mode **NEW**
 - Dynamic Mode **NEW**
 - Creep Mode **NEW**
- Inching brake pedal
- Accurate weighing system
- Eco Report **NEW**
- Hydraulic differential lock
- Automatic engine shutdown
- Optimised power matching

Durability

- Optimised axles
- Axle cooling **OPTION**
- Thermostat-based transmission cooling
- Optimised drive shaft
- High grade hoses

Operator Comfort

- Spacious soundproofed cabin
- Wide touchscreen monitor
- Centralised instrument cluster
- Ride control system
- Fully adjustable seat and armrest **NEW**
- Remote door control **NEW** **OPTION**
- Air compressor **NEW** **OPTION**
- Soft end stop

Serviceability

- ECD (Engine Connected Diagnostics) **NEW**
- Fully openable engine hood
- Hi-MATE telematic system
- Easy filter replacement
- Auto greasing system **OPTION**
- Wide core & fin radiator
- Regulated, automatic reversible fan

Safety

- Radar rear detection **NEW** **OPTION**
- Foldable side mirror **NEW**
- Seat belt warning alarm **NEW**
- Emergency stop switch **NEW**
- AAVM camera system **OPTION**
- IMOD (Intelligent Moving Object Detection) **OPTION**





Specifications and design are subject to change without notice. Pictures of Hyundai Construction Equipment Europe products may show other than standard equipment.

Hyundai Construction Equipment Europe nv.
Hyundailaan 4, 3980 Tessenderlo, Belgium.
Tel: (32) 14-56-2200 Fax: (32) 14-59-3405

EN – 2020.05 Rev 0

Ready to experience the Hyundai Effect?

Contact your Hyundai dealer.
hyundai-ce.eu/en/dealer-locator