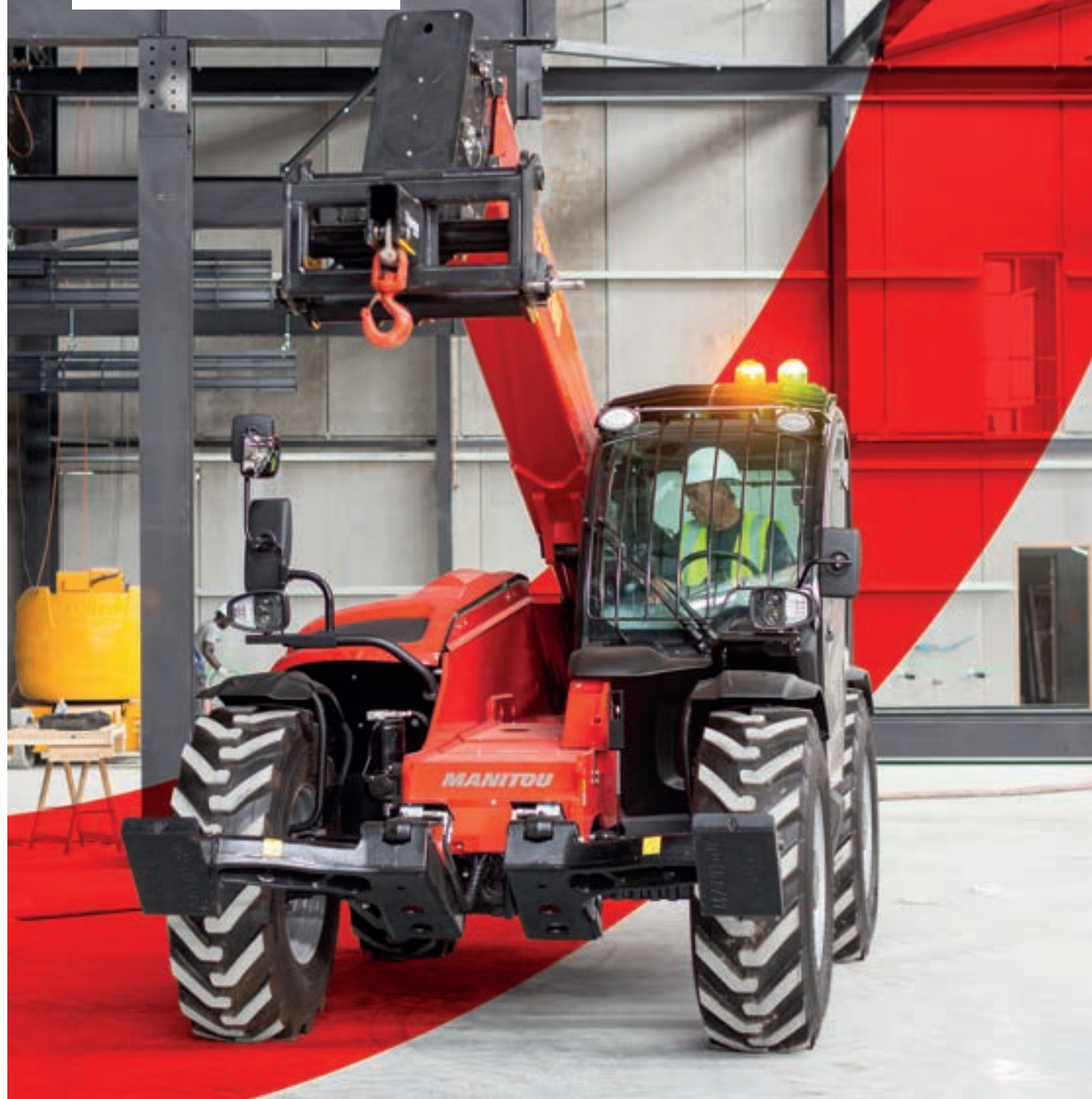


# RANGE **MT**

7/9/11/13 meters  
Middle lift



Scan and find out  
more information  
on [manitou.com](http://manitou.com)

 **MANITOU**  
HANDLING YOUR WORLD

Making operators and their environment safe

Manitou is committed to designing machines that provide optimum safety.

- Parking brake**  
Automatic parking brake with hill start assist to prevent accidents.
  - Joystick with driver presence detection**  
Equipped with a sensor, it automatically detects the presence of the driver to allow movement and reduces the risk of accidents. Works with gloves and in dusty environments.
  - Intuitive and intelligent dashboard**  
All controls are within easy reach, identified with pictograms and colour codes. The operator is alerted to its maintenance, use and safety by means of prioritised notifications.
  - "Easy Step" access to the driver's seat**  
The access to the driver's platform has been completely redesigned. The anti-slip step makes getting in and out of the vehicle even easier, reducing fatigue and the risk of falls.
  - Tilt adjustment**  
Standard system from 11m upwards for safe handling on slopes on all terrains.
- Tilt lock**  
Tilt lock for safe handling.
  - Orange belt**  
Visible belt to empower the operator and inform the working environment.

**SAFETY PACK**

Device that accompanies and protects the driver. He is informed in real time of any manoeuvre that may expose him to a risk. It simultaneously warns the teams on the site of an operator's inappropriate behaviour and and sends the information to the fleet manager. A simple tool for acquiring good reflexes.

**Simplified user's guide Videos**

Reduce Risks helps you to use your machines safely





Manitou is committed to reducing your total cost of ownership (TCO)

All our efforts are focused on creating machines that are efficient, durable and easy to maintain.

**STOP & START**

Thanks to the Stop & Start feature, which automatically switches off the engine when stationary, reducing your fuel consumption, noise level, CO2 and emissions. Fewer hours on the clock, longer maintenance intervals and a restart without turning the key.



High resale value!



- Eco mode to reduce your consumption**  
The engine speed is optimised while ensuring high performance. Fuel consumption and noise levels are significantly reduced.
- Quick and easy maintenance**  
Centralized lubrication, easy access to the machine core and consumables for efficient maintenance.
- Predisposition Reviv'oil**  
Filtering the hydraulic oil during each preventive maintenance reduces the risk of breakdowns and the associated costs.
- Tough as nails**  
A robust range to take you through any situation. With a heavy-duty cab and engine cover set back from the wheels, set back from the wheels and protected hoses, your Manitou is built to last.



All our telescopic handlers are connected

Connected solution

With connectivity, your telescopic handler has something extra.

- Increase productivity**  
Manage your fleet remotely and benefit from a multitude of information accessible on your PC, tablet or smartphone.
  - Anticipate maintenance**  
Save time : share your alerts directly with the technician to anticipate parts and reduce the time needed to intervene. With a maintenance contract you are assured of a reliable and irreproachable service.
- Analyse performance**  
Visualise the performance of your machines on graphs, easy to follow and interpret.
  - Work with peace of mind**  
Stay in control of your budget with a tailored warranty extension, and benefit from a tailor-made financing solution.

**Protect your equipment and control access**

Optionally, manage operator authorisation and control access to your machines to guarantee their safety and that of the workplace.

Productivity and profitability first and foremost

Because performance is at the heart of your concerns, our telescopic forklifts offer you features and a choice of transmissions adapted to your environment.



Turning Radius 3.65m

The autopower function automatically adjusts the engine speed according to the movement of the joystick by the driver's hand, making the movements easier for the operator. (\*only available on hydrostatic versions)

Fast, combined hydraulic movements thanks to the flow sharing valve\* combined with the variable displacement pump for more efficient work while reducing your consumption.

from **7m** to **13m** max. working Height

**3,5t** max. Capacity.

**2,28m** Width

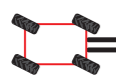
Movements  
**Hydraulics**  
accumulated

**Oscillating**  
Rear axle

**3** Steering modes

  
2 WHEELS  
STEERING

  
4 WHEELS  
STEERING

  
MODE  
CRABE

### Cost of transport **reduced**

Optimal dimensions for safe loading and unloading and safe transport.

**2.28 m width**

Enjoy a range that is suitable for container loading without the need to remove wheels.

### **SLINGING/STOWING**

Identified and accessible at the front and rear. 1-point slinging machine.

### **FLOATING FORK CARRIAGE**

Forks fold back for safe travel.



### **A range of all terrain**

With a ground clearance of 42.5cm and 4-wheel drive, you can overcome any obstacle. The oscillating rear axle ensures maximum grip and stability in all weather conditions.



**Intuitive & universal display**  
Available in 22 languages



**Exceptional visibility**  
Meticulously fitted roof louvre angles



**Easy Step access**  
Safety & ergonomics

**Simplified use sheets**  
Available in every machine

### **Front cut-out of the windscreen**

Easy attachment change  
View your load in the down position

### **Redesigned panoramic visibility**

Enjoy a clear view of your load from any position

### **Curved rear window**

For a better view of your environment

**Tilt adjustment**  
(\*11 & 13m)  
Secure your handling, all terrain



Repairable engine cover, Highly resistant to shock and vibration

### **Stabilizers front-mounted compact**

In the machine width for working in cramped environments

**Ground clearance**  
**42.5 cm**

High off-road performance

### **Automatic parking brake**

### **The right model for you!**

Each telescopic handler has a consistent engine (75hp/100hp) benefitting from the best torque for maximum efficiency and minimum consumption.

Also choose the transmission (hydrostatic / torque converter) adapted to your needs, combining flexibility and working precision.

*\*depending on model*









## **Why choose the MT range middle lift?**

Enjoy the combination of optimised dimensions and all-terrain performance that will facilitate your access to a variety of job sites. Benefit from Manitou's many innovations for enhanced safety. A true tool carrier with a wide range of attachments, discover a unique versatility on the market to cover all your applications. Designed to last, these machines will be your best asset! The perfect alliance between profitability, safety and reduction of your TCO !



# Performance and versatility at the service of your daily life

Manitou telescopic handlers are real tool carriers on which you can easily connect, the Manitou approved attachment specifically adapted to your application.

<b>Floating fork carriage</b>	<b>Recovery bucket</b>	<b>Fixed basket</b>
The essential attachment for handling palletised loads. Forks fold down for easy transport and road travel.	This bucket is dedicated to all construction applications to move bulk material with a maximum density of 2100kg/m3. The dumping and digging angle is specially designed for our machines.	Simple and safe attachment for lifting up to 3 people or 365kg maximum. Only available on Access versions.
		
<b>Material basket</b>	<b>Jib Extension</b>	<b>Winch</b>
An efficient and cost-effective solution for moving materials safely in all types of applications, environments and weather conditions. An excellent lif!	Jib crane dedicated to suspended loads (beams, structural elements, etc.) It's design makes it possible to reach tight places and increase the truck's reach.	Perfect for moving vertically suspended loads as a mobile or tower crane.
		

## SIDESHIFT CARRIAGE

Lateral movement of the forks when placing or removing loads.

## ECS : EASY CONNECT SYSTEM

As standard, this system allows the hydraulic line to be decompressed in seconds, to allow the simple and quick change of hydraulic attachment.

## HYDRAULIC LOCK

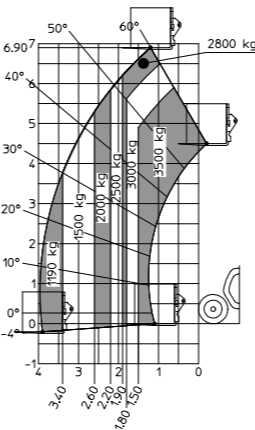
Optional hydraulic lock allows a non-hydraulic attachment to be changed and secured without leaving the machine.

## REMOTE BUTTON FOR DHW

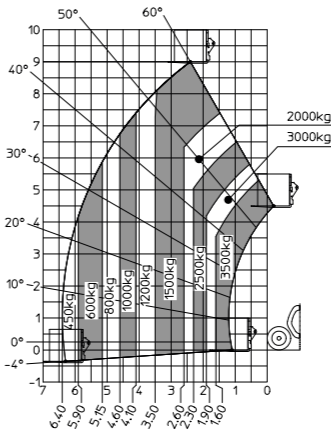
Yellow button on the headlamp for use from the outside.

	MT 735	MT 935	MT 1135	MT 1135 H	MT 1335	MT 1335 H	MT1335 HA
Capacity max. (kg)	3500	3500	3500	3500	3500	3500	3500
Forward Reach (m)	4	6.40	7.20	7.20	8.65	8.65	8.65
Lifting height max. (m)	6.90	9	10.9	10.9	12.60	12.60	12.60
Engine standard	STAGE V	STAGE V	STAGE V	STAGE V	STAGE V	STAGE V	STAGE V
Power CH (kW)	75 ch / 55.4 kW	75 ch / 55.4 kW	75 ch / 55.4 kW	100 ch / 74.4 kW	75 ch / 55.4 kW 100 ch / 74.4 kW	75 ch / 55.4 kW 100 ch / 74.4 kW	75 ch / 55.4 kW 100 ch / 74.4 kW
Travel speed max. (km/h)	24.9	24.9	24.9	24.9	24.9	24.9	24.9
Transmission	Torque converter	Torque converter	Torque converter	Hydrostatic	Torque converter	Hydrostatic	Hydrostatic
Empty weight (with forks) (kg)	6930	7800	9360	9360	9470 (75 ch) 9660 (100 ch)	9470 (75 ch) 9660 (100 ch)	9470 (75 ch) 9660 (100 ch)
Overall Width (m)	2.28	2.28	2.28	2.28	2.28	2.28	2.28
Overall height (m) (without beacon)	2.48	2.48	2.48	2.48	2.48	2.48	2.48
Overall Length (m)	4.78	4.78	5.72	5.72	5.72	5.72	5.72
Ground clearance (cm)	42.5	42.5	42.5	42.5	42.5	42.5	42.5
External turning radius (m)	3.78	3.78	3.78	3.78	3.78	3.78	3.78
Basket option	/	/	/	/	/	/	yes

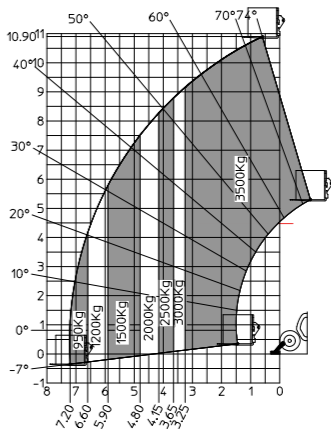
## MT 735



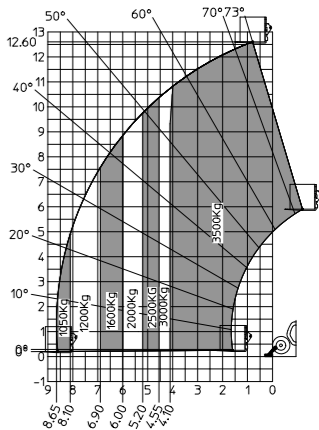
## MT 935



## MT 1135 MT 1135 H

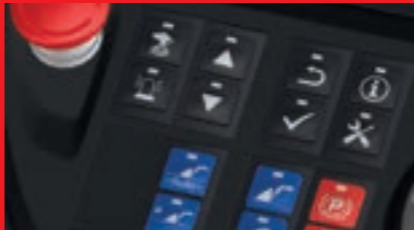


## MT 1335 MT 1335 H MT 1335 HA



## A tailor-made solution adapted to your needs

Discover a wide range of options available. Speak with your local Manitou dealer.



## Boom suspension

Absorption of unwanted boom movements when driving with or without load. Less strain on components, safety and comfort guaranteed.

\* Comfort Ride Control (CRC)



## Fast speed options

Boost your performance and travel on the road.

(\*depending on the model)



## Rear Impact Camera or Radar

Maximise your safety on site with our systems.

2 possible finishes  
to meet your needs.

Standard

Comfort



“

*« As a construction worker,  
I am looking for versatile,  
cost-effective and safe  
machines that allow me  
to optimise my site  
operations. »*

**Your dealer**



Scan and find out  
more information  
on **manitou.com**

