

Technical sheet :

160 ATJ+

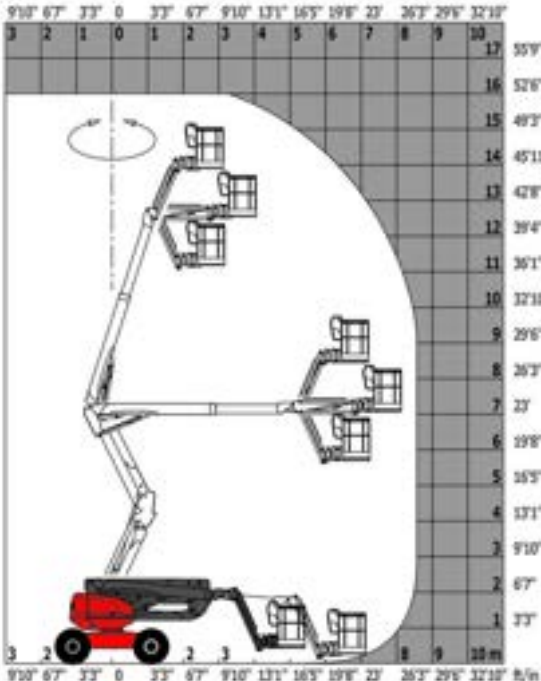


Capacities		Metric
Working height	h21	16.21 m
Floor height (access)	h20	0.38 m
Platform height	h7	14.21 m
Max. outreach		8.52 m
Overhang		7.40 m
Pendular arm rotation (top / bottom)		+66.50 ° / -65.80 °
Platform capacity	Q	408 kg
Turret rotation		350 °
Platform rotation (right / left)		90 ° / 90 °
Number of people (indoor / outdoor)		3 / 3
Weight and dimensions		
Platform weight*		7500 kg
Platform dimensions (length x width)	lp / ep	2.30 m x 0.90 m
Overall length	l1	7.09 m
Overall width	b1	2.45 m
Overall height	h17	2.47 m
Overall length (stowed)	l9	4.89 m
Overall height (stowed) **	h18	2.94 m
Counterweight offset (turret at 90°)	a7	0.15 m
Internal turning radius (over tyres)	b13	1.28 m
External turning radius	Wa3	4.09 m
Ground clearance at centre of wheelbase	m2	0.40 m
Wheelbase	y	2.20 m
Performances		
Drive speed - stowed		5 km/h
Drive speed - raised		1 km/h
Gradeability		45 %
Permissible leveling		5 °
Wheels		
Tires type		Foam-filled
Standard tires		910 x 370 mm
Drive wheels (front / rear)		2 / 2
Steering wheels (front / rear)		2 / 2
Braking wheels (front / rear)		0 / 2
Engine/Battery		
Engine brand / model		Kubota - D1105-E4B
Engine norm		Stage V
I.C. Engine power rating / Power (kW)		24.50 Hp / 18.50 kW
Miscellaneous		
Ground Pressure		11.60 dan/cm ²
Hydraulic Pressure		340 bar
Hydraulic tank capacity		531 l
Fuel tank		51 l
Noise to environment (LwA)		< 105 dB
Vibration on hands/arms		< 0.50 m/s ²
Daily consumption **		7 l
Standards compliance		
This machine is in compliance with:		European directives: 2006/42/EC- Machinery (revised EN280:2013) - 2004/108/EC (EMC) - 2006/95/EC (Low voltage)

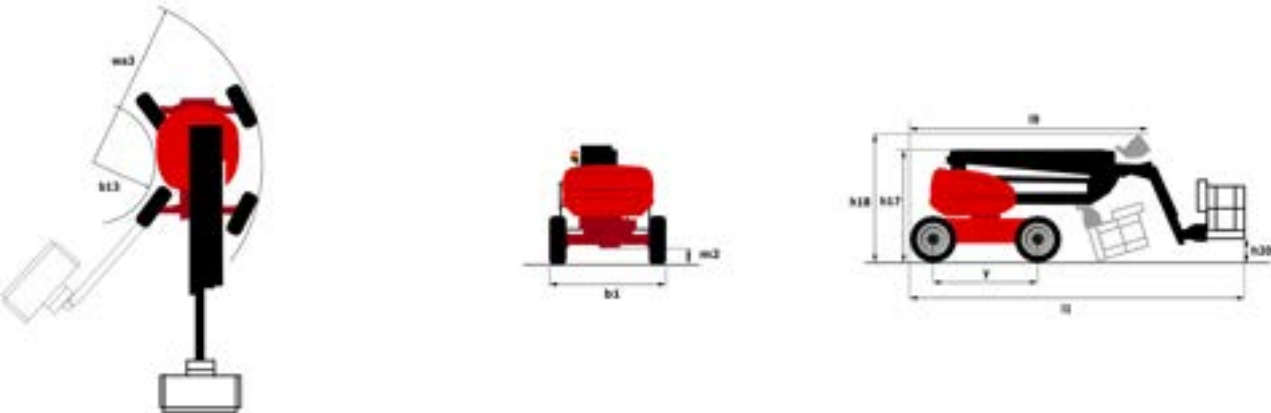
*Varies according to options and standards of the country to which the machine is delivered

160 ATJ+ - Load chart

Load Chart for MEWP Metric



160 ATJ+ - Dimensional drawing



Equipment

Standard

230V Predisposition
4 simultaneous movements
4 wheel drive
4 wheel steer with crab mode
Audible alarm and illuminated indicator lamp (leveling, overload, lowering)
Backup electrical pump
CAN bus technology
Connected machine
Dead man pedal
Differential locking on rear axle
Easy fast slinging system
Front axle with limited slip
Fuel gauge with low level indicator
Hom in the platform
Hour meter
Integrated diagnostic assistance
LED rotating beacon
Large basket with three entries
Large color screen on turret
Leveling unlocking
Management via engine speed bearing
Oscillating front axle
Stop & Go system

Optional

230V socket with circuit-breaker on boom head
Additional storage boxes
Battery blanket
Battery charger automatic start
Biodegradable hydraulic oil - Grade 32
Coded anti-start
Continuous turret rotation
Fuel tank locking cap
Highly capacity battery
Hydraulic oil heater
Key lock on turret cover
Large basket 2.30m with lateral door
Lockable fuel cap
Narrow basket 1.80m
Non-marking tyres
On-board generator (3,5 or 5 kW)
Panel cradle
Personalized paintwork
Pipe cradle
Protection screen and key lock turret
Safety kit - Harness + helmet
Safety valve
Secondary Protection System (SPS)
Socket 230 V + differential circuit breaker
Spark arresting muffler
Water heater
Water predisposition
Working light



Head Office

B.P. 249 - 430 rue de l'Aubinière
44150 Ancenis Cedex - France

Tel: +33 (0)2 40 09 10 11 - Fax: +33 (0)2 40 09 10 97

www.manitou.com



This publication provides a description of the configuration versions and options for Manitou products, which may differ for equipment. The equipment presented in this brochure may be part of a series, as an option, or it may not be available, depending on the versions. Manitou reserves the right, at any time and without notice, to amend the specifications described and represented. The specifications provided do not bind the manufacturer. For more details, please contact your Manitou agent. This is not a contractually binding document. The presentation of the products is not contractually binding. List of specifications non-exhaustive. The logos as well as the visual identity of the company are owned by Manitou and cannot be used without authorisation. All rights reserved. The photos and diagrams contained in this brochure are only provided for consultation and information purposes.

MANITOU BF SA - Limited company with board of directors - Share capital: 39,668,399 euros - 857 802 508 RCS Nantes