



MANITOU
GROUP

ATTACHMENT CATALOGUE

COMPLETE

December 6, 2023

MANITOU
GROUP | ATTACHMENTS

SET THE WORLD IN MOTION

Founded over 60 years ago by the Braud family, the Manitou Group now operates worldwide. A world-leader in all-terrain material handling, the Group designs, manufactures, distributes and services equipment for construction, agriculture and industries.

The Group's product ranges include: all-terrain fixed, rotating and heavyload telehandlers; all-terrain, semi-industrial and industrial masted forklift trucks; wheel or track skid-steer loaders; articulated loaders; access platforms; truck-mounted forklifts; warehousing equipment; and attachments.

Through its iconic brands - Manitou, Gehl- and its worldwide network of 1,050 dealers, the Group offers the best solutions to create optimum value for its customers.

Headquartered in France, the Group registered a revenue in 2021 of 1.9 billion euros in 140 countries and employs 4,500 people, all strongly focused on satisfying customers.



2 brands

distributed by 1050 dealers in 140 countries



- 32 subsidiaries
- 10 production sites
- 4,500 employees worldwide
- 64% of the share capital held by the founding families
- 82% of revenue comes from international sales
- 1.9 billion euros of turnover in 2021



MANITOU is pleased to present you this new version of its attachment catalogue. It will give you a complete view on the wide variety of original, homologated attachments marketed by Manitou for its telehandlers and forklift trucks.

Being simultaneously a producer of telehandlers and a producer of attachments, Manitou has the technical knowledge, the practical experience and the required facilities to control and ensure perfect efficiency of each attachment + machine pairing.

Manitou applies a demanding internal procedure that leads to the homologation of each attachment + machine pairing. This unique procedure brings guaranteed safety and unbeatable efficiency. Choosing a homologated original Manitou attachment and respecting Manitou's compatibilities, you can be sure you'll get the best of your machine, making no compromise with safety and staying in line with the European regulation.

We trust you'll find everything you need in this catalogue. Should you need something we haven't added to our offer yet, do contact your nearest Manitou dealer: our special solution department will certainly be able to craft the right tailor-made solution for you!

All attachments capacities given in this document are nominal capacities:

- Bucket capacities are calculated according to the ISO 7546 norm: they correspond to the heaped bucket capacity in m3 calculated according to the norm
- Grab bucket capacities given are total capacities with closed grab (in m3)
- Concrete mixing bucket, silage facing bucket, feeding bucket, shear grab & shear bucket as well as concrete & crane skip capacities are given in l and calculated to guarantee a good efficiency of all functions (no struck capacities)
- Sweeper capacities are max. dirt container capacities
- Platform capacities are given in kg INCLUDING 2 or 3 people (according to platform type)
- All other capacities are SWL (Safe Working Load) - in kg
- All compatibilities are given for the machines available for sales when this guide was issued. For machines produced earlier please contact your Manitou dealer.

Compatibility

Having legibility in mind we have simplified the list of machines in this guide. It should be read as follows:

- All compatibilities are given for the machines present in Manitou's offer on the guide's issuing day.
- For older machines please contact your Manitou dealer.

Material densities weights

Material	kg/m ³	Material	kg/m ³
Apples	525	Manure (farmyard)	922
Ashes	604	Nitrate fertiliser	1250
Barley	600	Oats	415
Beet pulp (nuts)	604	Onions	556
Beet pulp (pressed)	906	Peat (dry)	400
Brewers grain	1110	Petroleum coke	680
Brick aggregate	1828	Potatoes	699
Carrots	636	Refuse (town)	318
Cement (Portland)	1440	Rubble	1047
Cement (natural)	874	Sand (dry)	1550
Chalk	795	Sand (wet)	1890
Clay (fine)	2080	Sawdust	238
Clay (wet)	1680	Silage (ensile)	747
Coal (anthracite)	1046	Silage (green)	349
Coal (bituminous)	765	Slurry	1780
Coke (loose)	570	Snow (fresh)	200
Earth (dry)	1150	Snow (wet)	400
Fertiliser (mixed)	1030	Sodium chloride (dry salt)	1300
Flour	445	Straw (high density bale)	254
Gravel (dry)	1650	Sugar beet	530
Hay (normal density bale)	190	Turnips	540
Lime (quick)	881	Wheat	730
Limestone (crushed)	1530		

WINCH RANGE

Range



296 Heavy Duty Hydraulic Winch
298 Hydraulic Winch

301 Variowinch



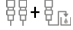


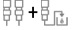

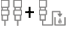
HEAVY DUTY HYDRAULIC WINCH



- Hydraulic motor+ end of cable automatic movement stop.
- Oil immersed negative break.
- Double or quadruple line pull (according to type).
- Homologated swivel self locking hook.
- Winch storage stand with sleeves for fork handling.
- Note: dimensions below are given for winch placed on its stands.

[The 3D picture at the top of this page is the reference Winch 23T - 939329].

- Turns your telehandler into a crane.
- Extremely fast implementation on the MANITOU carriage.
- Easy steering from the cab or with the machine's remote control (optional).
- Fast and accurate movements.

	W 13500 / 13	W 16000 / 13	W 20000 / 14	W 25000 / 14	Winch 9 T	Winch 23 T
Distance to center of gravity (mm)	434	434	423	423	387	423
Max. outreach (mm)	682	682	722	722	532	722
Working height (mm)	13000	13000	14000	14000	14000	14000
Capacity (kg)	13500	16000	20000	25000	9000	23000
Overall weight (kg)	1185	1185	1450	1450	850	1550
Overall height (mm)	2328	2328	2623	2623	2259	2623
Overall length (mm)	1200	1200	1200	1200	1200	1200
Cable loop	2	2	2	2	1	2
Width (mm)	1250	1250	1250	1250	1250	1250
Depth (mm)	975	975	1044	1044	975	1044
Cable length (mm)	60000	60000	60000	60000	30000	60000
Machine Equipment						
Hook Speed (m/mn)	-	-	-	-	22.50	12

Machines compatibility

Reference number E-RECO	52702240	52702241	52702470	52693990	939030	939329
MHT 790 ST5	-	-	-	-	X	-
MHT 10135 ST5	X	-	-	-	-	-
MHT 10160 ST5	-	X	-	-	-	-
MHT 10200 ST5	-	-	X	-	-	-
MHT 11250 ST5	-	-	-	X	-	-
MHT 12330	-	-	-	-	-	X
MHT-X 790 Mining	-	-	-	-	X	-
MHT-X 790 ST3A	-	-	-	-	X	-
MHT-X 11250 Mining	-	-	-	-	-	X
MHT-X 12330	-	-	-	-	-	X

MANDATORY MACHINE EQUIPMENT:  + 



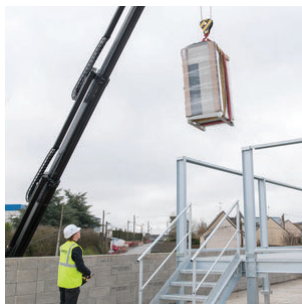
HYDRAULIC WINCH



- Hydraulic motor + end of cable automatic movement stop.
- Oil immersed negative break.
- Double or quadruple line pull (according to type).
- Homologated swivel self locking hook.
- Winch storage stand with sleeves for fork handling.
- Note: dimensions below are given for winch placed on its stands.
- MRT Vision+ : Significant hook speed increase through machine/attachment cooperation improvement.

- Turns your telehandler into a crane.
- Extremely fast implementation on the MANITOU carriage.
- Easy steering from the cab or with the machine's remote control (optional).
- Fast and accurate movements.

[The 3D picture at the top of this page is the reference Winch 5T - 921341].



	W 3000 / 36M	W 3000 DI / 46M	W 6000 / 32M	Winch 3T	Winch 3T MRT	Winch 3T TD	Winch 5T
Distance to center of gravity (mm)	320	320	350	320	320	320	350
Max. outreach (mm)	515	689	542	519	515	689	541
Working height (mm)	36000	46000	32000	24000	33000	46000	24000
Capacity (kg)	3000	3000	6000	3000	3000	3000	5000
Overall weight (kg)	305	490	439	310	320	400	420
Overall height (mm)	1803	1803	1803	1869	1868	1869	1869
Overall length (mm)	900	900	900	900	900	900	900
Cable loop	1	Direct	1	1	1	Direct	1
Width (mm)	1080	1080	1080	1080	1080	1080	1080
Depth (mm)	763	838	838	763	763	838	838
Cable length (mm)	75000	48000	67000	49000	70000	49000	53000
Machine Equipment							
Hook Speed (m/mn)	27	35	17	15	15	30	14

Machines compatibility

Reference number	-	-	-	885236	-	-	-
MT 735 75D ST5	-	-	-	X	-	-	-
MT 935 75D ST5	-	-	-	X	-	-	-
MT 1135 75 D	-	-	-	X	-	-	-
MT 1135 H 100D	-	-	-	X	-	-	-
MT 1335 75D ST5	-	-	-	X	-	-	-
MT 1335 100D ST5	-	-	-	X	-	-	-
MT 1335 H 75D ST5	-	-	-	X	-	-	-
MT 1335 H 100D ST5	-	-	-	X	-	-	-
MT 1335 HA 75D ST5	-	-	-	X	-	-	-
MT 1335 HA 100D ST5	-	-	-	X	-	-	-
MT 1440 A	-	-	-	X	-	-	-
MT 1440 HA	-	-	-	X	-	-	-
MT 1840 A	-	-	-	X	-	-	-
MT 1840 HA	-	-	-	X	-	-	-
MT-X 1440	-	-	-	X	-	-	-
MT-X 1440 A	-	-	-	X	-	-	-
MT-X 1840	-	-	-	X	-	-	-
MT-X 1840 A	-	-	-	X	-	-	-
Reference number E-RECO	52717650	52717900	52717351	921337	939393	939111	921341
MRT 1645 75	X	X	X	X	X	X	X
MRT 1645 115	X	X	X	X	X	X	X
MRT 1845 75	X	X	X	X	X	X	X
MRT 1845 115	X	X	X	X	X	X	X
MRT 2145 115	X	X	X	X	X	X	X
MRT 2260	X	X	X	X	X	X	X
MRT 2260 e	X	X	X	-	-	-	-
MRT 2545 115	X	X	X	X	X	X	X
MRT 2570	X	X	X	X	X	X	X

W 3000 / 36M	W 3000 DI / 46M	W 6000 / 32M	Winch 3T	Winch 3T MRT	Winch 3T TD	Winch 5T
--------------	-----------------	--------------	----------	--------------	-------------	----------

Machines compatibility							
MRT 2660	X	X	X	X	X	X	X
MRT 2660 e	X	X	X	-	-	-	-
MRT 3060	X	X	X	X	X	X	X
MRT 3570	X	X	X	X	X	X	X
MRT 3570 ES	X	X	X	X	X	X	X
MRT-X 1645	X	X	X	X	X	X	X
MRT-X 1845	X	X	X	X	X	X	X
MRT-X 2145	X	X	X	X	X	X	X
MRT-X 2260	X	X	X	X	X	X	X
MRT-X 2545	X	X	X	X	X	X	X
MRT-X 2570	X	X	X	X	X	X	X
MRT-X 2660	X	X	X	X	X	X	X
MRT-X 3060	X	X	X	X	X	X	X
MRT-X 3570	X	X	X	X	X	X	X
MRT-X 3570 ES	X	X	X	X	X	X	X

MANDATORY MACHINE EQUIPMENT:  + 



VARIOWINCH




- Hydraulic motor + end of cable automatic movement stop.
- Oil immersed negative break.
- Patented variable speed concept.
- Autonomous, 100% hydraulic speed adaptation to load.
- Homologated swivel self locking hook.
- Winch storage stand with sleeves for yard handling.
- Note: dimensions below are given for winch placed on its stands ; working weight: 700kg.
- MRT Vision+ : significant hook speed increase through machine/attachment cooperation improvement.
- Limited capacity for MRT 3050.

- Turns your telehandler into a crane.
- 4x faster than a standard Manitou 5t winch / 3x faster than a 3t one.
- Speed is continuously adapted to the load & operator's speed requirement.
- Max. speed 60m/min (MRT 3255, no load, lifting).
- Easy steering from the cab or with the machine's remote control (optional).

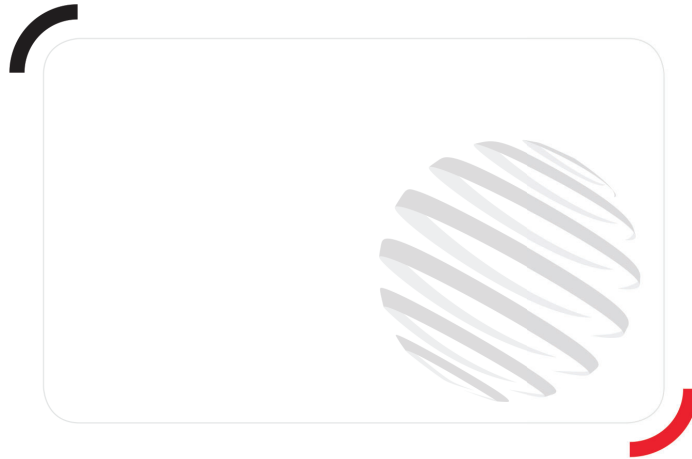
[The 3D picture at the top of this page is the reference VARIOWINCH 7.2 t - 52576737].



	W 7200 V
Max. outreach (mm)	238
Working height (mm)	36000
Capacity (kg)	7200
Overall weight (kg)	700
Overall height (mm)	2408
Overall length (mm)	1200
Cable loop	1
Width (mm)	1223
Depth (mm)	638
Cable length (mm)	76000
Machine Equipment	
Hook Speed (m/mn)	60.60

Machines compatibility	
Reference number E-RECO	52735674
MRT 2260	X
MRT 2260 e	X
MRT 2570	X
MRT 2660	X
MRT 2660 e	X
MRT 3060	X
MRT 3570	X
MRT 3570 ES	X
MRT-X 2260	X
MRT-X 2570	X
MRT-X 2660	X
MRT-X 3060	X
MRT-X 3570	X
MRT-X 3570 ES	X

MANDATORY MACHINE EQUIPMENT: 



MANITOU GROUP ATTACHMENTS

Head Office

B.P. 249 - 430 rue de l'Aubinière

44150 Ancenis Cedex - France

Tel: +33 (0)2 40 09 10 11 - Fax: +33 (0)2 40 09 10 97

www.manitou.com



This publication provides a description of the configuration versions and options for Manitou products, which may differ for equipment. The equipment presented in this brochure may be part of a series, as an option, or it may not be available, depending on the versions. Manitou reserves the right, at any time and without notice, to amend the specifications described and represented. The specifications provided do not bind the manufacturer. For more details, please contact your Manitou agent. This is not a contractually binding document. The presentation of the products is not contractually binding. List of specifications non-exhaustive. The logos as well as the visual identity of the company are owned by Manitou and cannot be used without authorisation. All rights reserved. The photos and diagrams contained in this brochure are only provided for consultation and information purposes.

MANITOU BF SA - Limited company with board of directors - Share capital: 39,668,399 euros - 857 802 508 RCS Nantes