



MANITOU
GROUP

ATTACHMENT CATALOGUE

COMPLETE

December 6, 2023

MANITOU
GROUP | **ATTACHMENTS**

SET THE WORLD IN MOTION

Founded over 60 years ago by the Braud family, the Manitou Group now operates worldwide. A world-leader in all-terrain material handling, the Group designs, manufactures, distributes and services equipment for construction, agriculture and industries.

The Group's product ranges include: all-terrain fixed, rotating and heavyload telehandlers; all-terrain, semi-industrial and industrial masted forklift trucks; wheel or track skid-steer loaders; articulated loaders; access platforms; truck-mounted forklifts; warehousing equipment; and attachments.

Through its iconic brands - Manitou, Gehl- and its worldwide network of 1,050 dealers, the Group offers the best solutions to create optimum value for its customers.

Headquartered in France, the Group registered a revenue in 2021 of 1.9 billion euros in 140 countries and employs 4,500 people, all strongly focused on satisfying customers.



2 brands

distributed by 1050 dealers in 140 countries



- 32 subsidiaries
- 10 production sites
- 4,500 employees worldwide
- 64% of the share capital held by the founding families
- 82% of revenue comes from international sales
- 1.9 billion euros of turnover in 2021



MANITOU is pleased to present you this new version of its attachment catalogue. It will give you a complete view on the wide variety of original, homologated attachments marketed by Manitou for its telehandlers and forklift trucks.

Being simultaneously a producer of telehandlers and a producer of attachments, Manitou has the technical knowledge, the practical experience and the required facilities to control and ensure perfect efficiency of each attachment + machine pairing.

Manitou applies a demanding internal procedure that leads to the homologation of each attachment + machine pairing. This unique procedure brings guaranteed safety and unbeatable efficiency. Choosing a homologated original Manitou attachment and respecting Manitou's compatibilities, you can be sure you'll get the best of your machine, making no compromise with safety and staying in line with the European regulation.

We trust you'll find everything you need in this catalogue. Should you need something we haven't added to our offer yet, do contact your nearest Manitou dealer: our special solution department will certainly be able to craft the right tailor-made solution for you!

All attachments capacities given in this document are nominal capacities:

- Bucket capacities are calculated according to the ISO 7546 norm: they correspond to the heaped bucket capacity in m³ calculated according to the norm
- Grab bucket capacities given are total capacities with closed grab (in m³)
- Concrete mixing bucket, silage facing bucket, feeding bucket, shear grab & shear bucket as well as concrete & crane skip capacities are given in l and calculated to guarantee a good efficiency of all functions (no struck capacities)
- Sweeper capacities are max. dirt container capacities
- Platform capacities are given in kg INCLUDING 2 or 3 people (according to platform type)
- All other capacities are SWL (Safe Working Load) - in kg
- All compatibilities are given for the machines available for sales when this guide was issued. For machines produced earlier please contact your Manitou dealer.

Compatibility

Having legibility in mind we have simplified the list of machines in this guide. It should be read as follows:

- All compatibilities are given for the machines present in Manitou's offer on the guide's issuing day.
- For older machines please contact your Manitou dealer.

Material densities weights

Material	kg/m ³	Material	kg/m ³
Apples	525	Manure (farmyard)	922
Ashes	604	Nitrate fertiliser	1250
Barley	600	Oats	415
Beet pulp (nuts)	604	Onions	556
Beet pulp (pressed)	906	Peat (dry)	400
Brewers grain	1110	Petroleum coke	680
Brick aggregate	1828	Potatoes	699
Carrots	636	Refuse (town)	318
Cement (Portland)	1440	Rubble	1047
Cement (natural)	874	Sand (dry)	1550
Chalk	795	Sand (wet)	1890
Clay (fine)	2080	Sawdust	238
Clay (wet)	1680	Silage (ensile)	747
Coal (anthracite)	1046	Silage (green)	349
Coal (bituminous)	765	Slurry	1780
Coke (loose)	570	Snow (fresh)	200
Earth (dry)	1150	Snow (wet)	400
Fertiliser (mixed)	1030	Sodium chloride (dry salt)	1300
Flour	445	Straw (high density bale)	254
Gravel (dry)	1650	Sugar beet	530
Hay (normal density bale)	190	Turnips	540
Lime (quick)	881	Wheat	730
Limestone (crushed)	1530		

JIBS Range



- 206 2-Hook Jib
- 209 3-Hook Jib
- 211 Big Bag Handler
- 215 Extensible Jib
- 218 Extensible jib with winch

- 220 Extension Jib
- 223 Extension Jib with winch
- 226 Frame Mounted Hook
- 229 Heavy Duty Frame Mounted Hook
- 231 Swing Jib



2-HOOK JIB



- 2 capacity / outreach couples.
 - Safety: homologated swivel self locking hook.
- [The 3D picture at the top of this page is the reference P 4000 - 921321].

- Robust solution for handling suspended loads.
- Jib fitted with 2 hooks to meet various needs of building sites.
- Adaptability for all yard handling applications



	P 4000	P 6000
Distance to center of gravity (mm)	785	950
Max. outreach (mm)	708	808
Capacity (kg)	4000	6000
Capacity 2 (kg)	1200	2000
Max @ outreach 2 (mm)	2708	2708
Overall weight (kg)	210	282
Overall length (mm)	2838	2838
Width (mm)	830	830
Machine Equipment	✕	✕

Machines compatibility		
Reference number	653226	-
MT 730 H	X	-
MT 735 75D ST5	X	-
MT 930 H	X	-
MT 930 HA	X	-
MT 935 75D ST5	X	-
MT 1135 75 D	X	-
MT 1135 H 100D	X	-
MT 1335 75D ST5	X	-
MT 1335 100D ST5	X	-
MT 1335 H 75D ST5	X	-
MT 1335 H 100D ST5	X	-
MT 1335 HA 75D ST5	X	-
MT 1335 HA 100D ST5	X	-
MT 1440 A	X	-
MT 1440 HA	X	-
MT 1840 A	X	-
MT 1840 easy ST5	X	-
MT 1840 HA	X	-
MT-X 1440	X	-
MT-X 1440 A	X	-
MT-X 1840	X	-
MT-X 1840 A	X	-
MXT 840 K	X	-
MXT 840 P	X	-
MXT 1740 K	X	-
MXT 1740 P	X	-
Reference number E-RECO	921321	921322
MRT 1645 75	X	X
MRT 1645 115	X	X
MRT 1845 75	X	X
MRT 1845 115	X	X
MRT 2145 115	X	X

	P 4000	P 6000
Machines compatibility		
MRT 2260	X	X
MRT 2260 e	X	X
MRT 2545 115	X	X
MRT 2570	X	X
MRT 2660	X	X
MRT 2660 e	X	X
MRT 3060	X	X
MRT 3570	X	X
MRT 3570 ES	X	X
MRT-X 1645	X	X
MRT-X 1845	X	X
MRT-X 2145	X	X
MRT-X 2260	X	X
MRT-X 2545	X	X
MRT-X 2570	X	X
MRT-X 2660	X	X
MRT-X 3060	X	X
MRT-X 3570	X	X
MRT-X 3570 ES	X	X

MANDATORY MACHINE EQUIPMENT: ✕



3-HOOK JIB



- 3 capacity / outreach couples.
- Safety: homologated swivel self locking hook.
- Perfect attachments for all heavy suspended loads.
- Jib fitted with 3 hooks to meet needs of building sites.
- Adaptability for all yard handling applications.

[The 3D picture at the top of this page is the reference P 25 T - 53010431].



	JH 16 T - 10 T - 7.5 T	JH 20 T - 14 T - 10 T	JH 13.5 T - 10 T - 7.5 T	P 9 T	P 25 T	P 36 T
Distance to center of gravity (mm)	821	821	821	718	901	930
Max. outreach (mm)	700	700	700	470	700	905
Capacity (kg)	16000	20000	13500	9000	25000	36000
Capacity 2 (kg)	10000	14000	10000	5000	18000	16000
Capacity 3 (kg)	7500	10000	7500	2000	13000	10000
Max @ outreach 2 (mm)	1350	1350	1350	1385	1250	2005
Max @ outreach 3 (mm)	2000	2000	2000	2300	1800	3000
Overall weight (kg)	555	590	555	295	890	1490
Overall length (mm)	2215	2215	2215	2518	2085	3351
Width (mm)	830	830	830	815	850	1170
Machine Equipment	×	×	×	×	×	×

Machines compatibility						
Reference number E-RECO	52701741	52701742	52701740	930830	53010431	52604320
MHT 790 ST5	-	-	-	X	-	-
MHT 10135 ST5	-	-	X	-	-	-
MHT 10160 ST5	X	-	-	-	-	-
MHT 10200 ST5	-	X	-	-	-	-
MHT 11250 ST5	-	-	-	-	X	-
MHT 12330	-	-	-	-	X	X
MHT-X 790 Mining	-	-	-	X	-	-
MHT-X 790 ST3A	-	-	-	X	-	-
MHT-X 10135 ST3A	-	-	X	-	-	-
MHT-X 10160 ST3A	X	-	-	-	-	-
MHT-X 10200 ST3A	-	X	-	-	-	-
MHT-X 11250 Mining	-	-	-	-	X	-
MHT-X 11250 ST3A	-	-	-	-	X	-
MHT-X 12330	-	-	-	-	X	X
MRT 2260 e	-	-	-	X	-	-
MRT 2570	-	-	-	X	-	-
MRT 2660 e	-	-	-	X	-	-
MRT 3570	-	-	-	X	-	-
MRT 3570 ES	-	-	-	X	-	-
MRT-X 2570	-	-	-	X	-	-
MRT-X 3570	-	-	-	X	-	-
MRT-X 3570 ES	-	-	-	X	-	-

MANDATORY MACHINE EQUIPMENT: ×



BIG BAG HANDLER



- Max. total capacity of 4000 kg with 4 loading points with 1000 kg capacity each.
- 4 bag stoppers mounted on each loading point- limit the risk of bag falling.
- Anti-swing bag stabilizer, increases stability.
- Increases efficiency & safety of big bag handling.
- Main structure made of tubes- limits the risk of bag damages & fall.
- Elevated structure- prevents any damage of trailer's roof while loading.
- Handles indifferently big bags with 1, 2 or 4 ears.



	HBB 1500 / 2400	HBB 2100 / 4000
Distance to center of gravity (mm)	388	459
Capacity (kg)	2400	4000
Overall weight (kg)	186	285
Overall height (mm)	1322	1322
Overall length (mm)	1643	2181
Fork spread (mm)	750	700
Width (mm)	1356	1356
Machine Equipment	×	×

Machines compatibility		
Reference number	52781808	52691660
Skid Steer Carriage reference	52578030	-
4 point Carriage	52742058	-
Euro Carriage	52742059	-
ALT950	X	-
GCT 3-14	X	-
GCT 3-14 +	X	-
MLA-T 533-145 V+ - ST5	X	-
MLT 420-60 H	X	-
MLT 625-75 H	X	-
MLT 630-115	X	-
MLT 630-115 V	X	-
MLT 630-115 V CP	X	-
MLT 635-130 PS+	X	-
MLT 635-140 V+	X	-
MLT 730-115 V	X	-
MLT 730-115 V CP	X	-
MLT 733-115 LSU	X	-
MLT 737-130 PS+	X	-
MLT 741-130 PS+	X	-
MLT 841-145 PS+	X	-
MLT 850-145 V+	X	X
MLT 940-140 V+	X	-
MLT 961-160 V+ L	X	X
MLT 1041-145 PS+L	X	-
MLT-X 625-75 H	X	-
MLT-X 732	X	-
MLT-X 735 T LSU	X	-
MLT-X 737-130 PS+	X	-
MLT-X 741 T LSU	X	-
MLT-X 841 - 145 PS+	X	-
MLT-X 850-145 V+	X	X
MLT-X 961-160 V+ L	X	X
MLT-X 1035 LT LSU	X	-

	HBB 1500 / 2400	HBB 2100 / 4000
Machines compatibility		
MLT-X 1041-145 PS+L	X	-
MT 420 H	X	-
MT 625 e	X	-
MT 625 H	X	-
MT 625 H Comfort	X	-
MT 625 HA	X	-
MT 735 75D ST5	X	-
MT 935 75D ST5	X	-
MT 1135 75 D	X	-
MT 1135 H 100D	X	-
MT 1335 75D ST5	X	-
MT 1335 100D ST5	X	-
MT 1335 H 75D ST5	X	-
MT 1335 H 100D ST5	X	-
MT 1335 HA 75D ST5	X	-
MT 1335 HA 100D ST5	X	-
MT 1440 A	X	-
MT 1440 HA	X	-
MT 1840 A	X	-
MT 1840 HA	X	-
MT-X 625 H	X	-
MT-X 733	X	-
MT-X 1033	X	-
MT-X 1440	X	-
MT-X 1440 A	X	-
MT-X 1840	X	-
MT-X 1840 A	X	-
MXT 840 K	X	-
MXT 840 P	X	-
MXT 1740 K	X	-
MXT 1740 P	X	-
ULM 412 H	X	-
ULM 412 H	X	-
ULM 415 H	X	-
ULM 415 H	X	-
Reference number E-RECO	931627	-
MRT 1645 75	X	-
MRT 1645 115	X	-
MRT 1845 75	X	-
MRT 1845 115	X	-
MRT 2145 115	X	-
MRT 2260	X	-
MRT 2260 e	X	-

	HBB 1500 / 2400	HBB 2100 / 4000
Machines compatibility		
MRT 2545 115	X	-
MRT 2570	X	-
MRT 2660	X	-
MRT 2660 e	X	-
MRT 3060	X	-
MRT 3570	X	-
MRT 3570 ES	X	-
MRT-X 1645	X	-
MRT-X 1845	X	-
MRT-X 2145	X	-
MRT-X 2260	X	-
MRT-X 2545	X	-
MRT-X 2570	X	-
MRT-X 2660	X	-
MRT-X 3060	X	-
MRT-X 3570	X	-
MRT-X 3570 ES	X	-

MANDATORY MACHINE EQUIPMENT: ✕



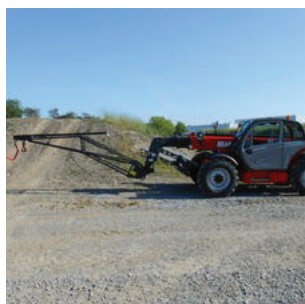
EXTENSIBLE JIB



- Capacity 600 kg @ 4 m/300 kg @ 5 m/100 kg @ 6 m.
- Safety: homologated rotating truss hook.
- Safety: self-locking, rotating homologated hook.
- Easy and safe manual extension.
- Integrated stabilizer for easy storage.

[The 3D picture at the top of this page is the reference JE 6000 / 600 - 939995].

- Simple & safe solution for the handling & the placement of roof trusses (packed or separated).
- User-friendly: dedicated truss hook & standard hook allowing the use as an extension jib.
- Maximum visibility during transport: adapted attachment design that allows driving the machine with a lowered machine boom.
- Increased safety with the dedicated truss hook: no need to climb on the trusses to release them once placed.
- Simple & durable attachment.



	JE 6000 / 600
Distance to center of gravity (mm)	1516
Max. outreach (mm)	3895
Capacity (kg)	600
Capacity 2 (kg)	300
Capacity 3 (kg)	100
Max @ outreach 2 (mm)	4845
Max @ outreach 3 (mm)	5845
Overall weight (kg)	265
Overall length (mm)	4347
Width (mm)	815
Machine Equipment	×

Machines compatibility	
Reference number	939995
MRT 2260	X
MRT 2260 e	X
MRT 2570	X
MRT 2660	X
MRT 2660 e	X
MRT 3060	X
MRT 3570	X
MRT 3570 ES	X
MRT-X 2260	X
MRT-X 2570	X
MRT-X 2660	X
MRT-X 3060	X
MRT-X 3570	X
MRT-X 3570 ES	X
MT 730 H	X
MT 735 75D ST5	X
MT 930 H	X
MT 930 HA	X
MT 935 75D ST5	X
MT 1135 75 D	X
MT 1135 H 100D	X
MT 1335 75D ST5	X
MT 1335 100D ST5	X
MT 1335 H 75D ST5	X
MT 1335 H 100D ST5	X
MT 1335 HA 75D ST5	X
MT 1335 HA 100D ST5	X
MT 1440 A	X
MT 1440 HA	X
MT 1840 A	X
MT 1840 HA	X

JE 6000 / 600

Machines compatibility

MT-X 1440	X
MT-X 1440 A	X
MT-X 1840	X
MT-X 1840 A	X

MANDATORY MACHINE EQUIPMENT: ✕





EXTENSIBLE JIB WITH WINCH



- Oil immersed negative brake.
- Safety: homologated swivel self locking hook.
- Safety: end of cable/hook upper position automatic movement stop.
- Manual extension (manual winch) with adjustable jib length.
- Adjustable length for an excellent polyvalence (extension: manual jib).

[The 3D picture at the top of this page is the reference PT 800 - 921323].

- Suspended load handling solution for all type of building sites.
- Perfect for transporting and placing beams, frames and other light and bulky elements.
- Its telescopic boom allows to gain greater flexibility while keeping an important forward reach.
- Tubular structure designed for an optimal weight / rigidity ratio
- Excellent adaptability.

	JWE 7000 / 800 39M	PT 800
Distance to center of gravity (mm)	1791	1791
Max. outreach (mm)	4525	4525
Working height (mm)	41000	32000
Capacity (kg)	800	800
Capacity 2 (kg)	1000	1000
Max @ outreach 2 (mm)	7183	7183
Overall weight (kg)	605	605
Overall length (mm)	4632	4632
Width (mm)	870	870
Cable length (mm)	49000	37000
Machine Equipment		
Hook Speed (m/mn)	30	30

Machines compatibility		
Reference number E-RECO	52717860	921323
MRT 1845 75	X	-
MRT 1845 115	X	-
MRT 2145 115	X	-
MRT 2260	X	X
MRT 2260 e	X	-
MRT 2545 115	X	-
MRT 2570	X	X
MRT 2660	X	X
MRT 2660 e	X	-
MRT 3060	X	X
MRT 3570	X	X
MRT 3570 ES	X	X
MRT-X 1845	X	-
MRT-X 2145	X	-
MRT-X 2260	X	X
MRT-X 2545	X	-
MRT-X 2570	X	X
MRT-X 2660	X	X
MRT-X 3060	X	X
MRT-X 3570	X	X
MRT-X 3570 ES	X	X

MANDATORY MACHINE EQUIPMENT: 



EXTENSION JIB



- Wide range of extension jibs from 600 kg to 2000 kg.
- Forward reach max from 2.5 m to 4 m.
- Safety: homologated swivel self locking hook.
- Extension jibs also available in winch version.

[The 3D picture at the top of this page is the reference P 600 - 921316]



	P 600	P 1000	P 1500	P 2000
Distance to center of gravity (mm)	-	1361	965	820
Max. outreach (mm)	3746	3797	2677	2336
Capacity (kg)	600	1000	1500	2000
Overall weight (kg)	210	210	165	190
Overall height (mm)	990	1547	1250	802
Overall length (mm)	3947	4120	2956	2479
Width (mm)	830	815	815	815
Machine Equipment	×	×	×	×

Machines compatibility

Reference number	653228	-	-	-
MT 730 H	X	-	-	-
MT 735 75D ST5	X	-	-	-
MT 930 H	X	-	-	-
MT 930 HA	X	-	-	-
MT 935 75D ST5	X	-	-	-
MT 1135 75 D	X	-	-	-
MT 1135 H 100D	X	-	-	-
MT 1335 75D ST5	X	-	-	-
MT 1335 100D ST5	X	-	-	-
MT 1335 H 75D ST5	X	-	-	-
MT 1335 H 100D ST5	X	-	-	-
MT 1335 HA 75D ST5	X	-	-	-
MT 1335 HA 100D ST5	X	-	-	-
MT 1440 A	X	-	-	-
MT 1440 easy ST5	X	-	-	-
MT 1440 HA	X	-	-	-
MT 1840 A	X	-	-	-
MT 1840 easy ST5	X	-	-	-
MT 1840 HA	X	-	-	-
MT-X 733	X	-	-	-
MT-X 733 Mining	X	-	-	-
MT-X 1033	X	-	-	-
MT-X 1033 Mining	X	-	-	-
MT-X 1440	X	-	-	-
MT-X 1440 A	X	-	-	-
MT-X 1840	X	-	-	-
MT-X 1840 A	X	-	-	-
MXT 840 K	X	-	-	-
MXT 840 P	X	-	-	-
MXT 1740 K	X	-	-	-
MXT 1740 P	X	-	-	-
TX 408	X	-	-	-
TX 4017	X	-	-	-

P 600	P 1000	P 1500	P 2000
-------	--------	--------	--------

Machines compatibility				
Reference number E-RECO	921316	921317	921319	921320
MRT 1645 75	X	X	X	X
MRT 1645 115	X	X	X	X
MRT 1845 75	X	X	X	X
MRT 1845 115	X	X	X	X
MRT 2145 115	X	X	X	X
MRT 2260	X	X	X	X
MRT 2260 e	X	X	X	X
MRT 2545 115	X	X	X	X
MRT 2570	X	X	X	X
MRT 2660	X	X	X	X
MRT 2660 e	X	X	X	X
MRT 3060	X	X	X	X
MRT 3570	X	X	X	X
MRT 3570 ES	X	X	X	X
MRT-X 1645	X	X	X	X
MRT-X 1845	X	X	X	X
MRT-X 2145	X	X	X	X
MRT-X 2260	X	X	X	X
MRT-X 2545	X	X	X	X
MRT-X 2570	X	X	X	X
MRT-X 2660	X	X	X	X
MRT-X 3060	X	X	X	X
MRT-X 3570	X	X	X	X
MRT-X 3570 ES	X	X	X	X

MANDATORY MACHINE EQUIPMENT: ✕



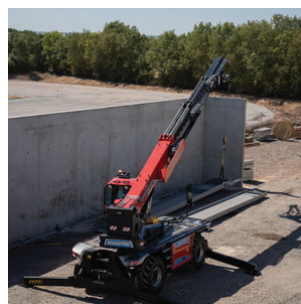
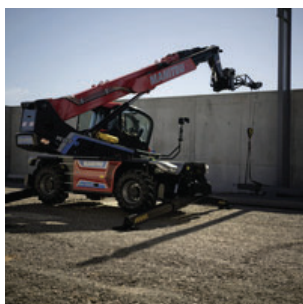
EXTENSION JIB WITH WINCH

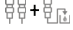
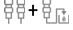
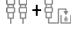
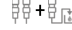
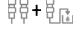


- Wide range of crane with winch from 600 kg to 2000 kg with a forward reach max. from 4 m to 2.5 m.
- Oil immersed negative brakes.
- Safety: homologated swivel self locking hook.
- Limit switch sensor (up and down).

[The 3D picture at the top of this page is the reference PT 1000 - 921326].

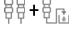
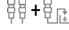
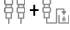
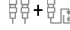
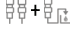
- Handling solution for suspended loads for all type of building sites.
- Turn your telehandler into a crane.
- Perfect for transporting and placing beams, frames and other suspended loads.
- Improves the forward reach of the telehandler.
- Its winch allows to gain greater flexibility while keeping an important forward reach.
- Tubular structure designed for an optimal weight/rigidity ratio.



	JW 1950 LB	JW 2500 / 2000 35M	JW 3000 / 1500 44M	JW 4100 / 600 68M	JW 4100 / 1000 34M
Distance to center of gravity (mm)	1153	885	962	1157	1157
Max. outreach (mm)	3542	2008	2633	3703	3542
Working height (mm)	27000	24000	35000	38000	27000
Capacity (kg)	1950	2000	1500	600	1000
Overall weight (kg)	382	400	368	94	299
Overall length (mm)	4107	2516	2990	4107	4107
Cable loop	1	1	Direct	Direct	1
Width (mm)	810	815	815	810	810
Cable length (mm)	56000	70000	37000	40000	56000
Machine Equipment					
Hook Speed (m/mn)	44	24	35	94	44

Machines compatibility					
Reference number E-RECO	52718275	52717582	52717710	52719496	52719497
MRT 1645 75	-	X	X	X	X
MRT 1645 115	-	X	X	X	X
MRT 1845 75	-	X	X	X	X
MRT 1845 115	-	X	X	X	X
MRT 2145 115	-	X	X	X	X
MRT 2260	X	X	X	X	X
MRT 2260 e	X	X	X	X	X
MRT 2545 115	-	X	X	X	X
MRT 2570	X	X	X	X	X
MRT 2660	X	X	X	X	X
MRT 2660 e	X	X	X	X	X
MRT 3060	X	X	X	X	X
MRT 3570	X	X	X	X	X
MRT 3570 ES	X	X	X	X	X
MRT-X 1645	-	X	X	X	X
MRT-X 1845	-	X	X	X	X
MRT-X 2145	-	X	X	X	X
MRT-X 2260	X	X	X	X	X
MRT-X 2545	-	X	X	X	X
MRT-X 2570	X	X	X	X	X
MRT-X 2660	X	X	X	X	X
MRT-X 3060	X	X	X	X	X
MRT-X 3570	X	X	X	X	X
MRT-X 3570 ES	X	X	X	X	X

MANDATORY MACHINE EQUIPMENT:  + 

	PT 600	PT 1000	PT 1500	PT 2000 (a)	PT 2000 (b)
Distance to center of gravity (mm)	1107	1107	927	857	857
Max. outreach (mm)	4104	4104	2633	2008	2008
Working height (mm)	38000	27000	35000	24000	24000
Capacity (kg)	600	1000	1500	2000	2000
Overall weight (kg)	278	299	370	389	400
Overall length (mm)	4104	3949	2887	2388	2387
Cable loop	Direct	1	Direct	1	1
Width (mm)	815	815	815	815	815
Cable length (mm)	40000	56000	37000	49000	70000
Machine Equipment					
Hook Speed (m/mn)	94	44	48	24	24

Machines compatibility					
Reference number E-RECO	921325	921326	921330	921331	939392
MRT 1645 75	X	X	X	X	X
MRT 1645 115	X	X	X	X	X
MRT 1845 75	X	X	X	X	X
MRT 1845 115	X	X	X	X	X
MRT 2145 115	X	X	X	X	X
MRT 2260	X	X	X	X	X
MRT 2545 115	X	X	X	X	X
MRT 2570	X	X	X	X	X
MRT 2660	X	X	X	X	X
MRT 3060	X	X	X	X	X
MRT 3570	X	X	X	X	X
MRT 3570 ES	X	X	X	X	X
MRT-X 1645	X	X	X	X	X
MRT-X 1845	X	X	X	X	X
MRT-X 2145	X	X	X	X	X
MRT-X 2260	X	X	X	X	X
MRT-X 2545	X	X	X	X	X
MRT-X 2570	X	X	X	X	X
MRT-X 2660	X	X	X	X	X
MRT-X 3060	X	X	X	X	X
MRT-X 3570	X	X	X	X	X
MRT-X 3570 ES	X	X	X	X	X

MANDATORY MACHINE EQUIPMENT:  + 



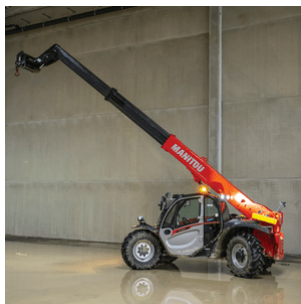
FRAME MOUNTED HOOK



- Range from 4000 kg to 6000 kg capacity.
- Directly hitched on carriage.
- Safety: homologated swivel self locking hook.

[The 3D picture at the top of this page is the reference JH 2500 - 52579090]

- Simple and cost efficient solutions for suspended load handling.
- Very compact attachment that preserves machine stability.
- Perfect for transporting construction elements and other loads present in construction or industrial sites.



	JH 2500	PC 50	PC 60
Distance to center of gravity (mm)	229	166	160
Max. outreach (mm)	506	470	470
Capacity (kg)	2500	5000	6000
Overall weight (kg)	85	115	120
Overall height (mm)	605	500	500
Overall length (mm)	654	606	606
Width (mm)	696	815	815
Machine Equipment	×	×	×

Machines compatibility

Reference number	-	708544	939050
All-Tach®	52579090	-	-
4 point Carriage	52742070	-	-
Euro Carriage	52742071	-	-
ALT950	-	X	-
GCT 3-14	X	-	-
GCT 3-14 +	X	-	-
MLA-T 533-145 V+ - ST5	-	X	-
MLT 420-60 H	-	X	-
MLT 625-75 H	-	X	-
MLT 841-145 PS+	-	X	-
MLT 850-145 V+	-	X	-
MLT 961-160 V+ L	-	-	X
MLT 1041-145 PS+L	-	X	-
MLT-X 625-75 H	-	X	-
MLT-X 741 T LSU	-	X	-
MLT-X 841 - 145 PS+	-	X	-
MLT-X 850-145 V+	-	X	-
MLT-X 961-160 V+ L	-	-	X
MLT-X 1041-145 PS+L	-	X	-
MT 420 H	-	X	-
MT 625 e	-	X	-
MT 625 H	-	X	-
MT 625 H Comfort	-	X	-
MT 625 HA	-	X	-
MT 735 75D ST5	-	X	-
MT 935 75D ST5	-	X	-
MT 1135 75 D	-	X	-
MT 1135 H 100D	-	X	-
MT 1335 75D ST5	-	X	-
MT 1335 100D ST5	-	X	-
MT 1335 H 75D ST5	-	X	-
MT 1335 H 100D ST5	-	X	-
MT 1335 HA 75D ST5	-	X	-

	JH 2500	PC 50	PC 60
Machines compatibility			
MT 1335 HA 100D ST5	-	X	-
MT 1440 A	-	X	-
MT 1440 HA	-	X	-
MT 1840 A	-	X	-
MT 1840 HA	-	X	-
MT-X 625 H	-	X	-
MT-X 733	-	X	-
MT-X 733 Mining	-	X	-
MT-X 1033	-	X	-
MT-X 1033 Mining	-	X	-
MT-X 1033 A Mining	-	X	-
MT-X 1440	-	X	-
MT-X 1440 A	-	X	-
MT-X 1840	-	X	-
MT-X 1840 A	-	X	-
ULM 412 H	X	-	-
ULM 412 H	X	-	-
ULM 415 H	X	-	-
ULM 415 H	X	-	-
Reference number E-RECO	-	921335	939050
MRT 1645 75	-	X	X
MRT 1645 115	-	X	X
MRT 1845 75	-	X	X
MRT 1845 115	-	X	X
MRT 2145 115	-	X	X
MRT 2260	-	X	X
MRT 2260 e	-	X	X
MRT 2545 115	-	X	X
MRT 2570	-	X	X
MRT 2660	-	X	X
MRT 2660 e	-	X	X
MRT 3060	-	X	X
MRT 3570	-	X	X
MRT 3570 ES	-	X	X
MRT-X 1645	-	X	X
MRT-X 1845	-	X	X
MRT-X 2145	-	X	X
MRT-X 2260	-	X	X
MRT-X 2545	-	X	X
MRT-X 2570	-	X	X
MRT-X 2660	-	X	X
MRT-X 3060	-	X	X
MRT-X 3570	-	X	X

MANDATORY MACHINE EQUIPMENT: ✕



HEAVY DUTY FRAME MOUNTED HOOK



- Suspended load capacity up to 25000 kg.
 - Safety: Homologated swivel self locking hook.
- [The 3D picture at the top of this page is the reference PC 9 T - 939970].

- Efficient and heavy duty suspended load solution.
- Directly hitched on carriage for secured application.
- Very compact attachment that preserves machine stability.

	JH 16000	JH 20000	PC 9 T	PC 25 T
Distance to center of gravity (mm)	385	401	186	398
Max. outreach (mm)	700	700	260	700
Capacity (kg)	16000	20000	9000	25000
Overall weight (kg)	340	355	129	460
Overall height (mm)	1068	1208	960	1258
Overall length (mm)	943	943	425	985
Width (mm)	830	830	815	850
Machine Equipment	×	×	×	×

Machines compatibility

Reference number E-RECO	52702450	52702460	939970	53008289
MHT 10135 ST5	X	-	-	-
MHT 10160 ST5	X	-	-	-
MHT 10200 ST5	-	X	-	-
MHT 11250 ST5	-	-	-	X
MHT 12330	-	-	-	X
MHT-X 10135 ST3A	X	-	-	-
MHT-X 10160 ST3A	X	-	-	-
MHT-X 10200 ST3A	-	X	-	-
MHT-X 11250 ST3A	-	-	-	X
MHT-X 12330	-	-	-	X
MRT 2260	-	-	X	-
MRT 2260 e	-	-	X	-
MRT 2570	-	-	X	-
MRT 2660	-	-	X	-
MRT 2660 e	-	-	X	-
MRT 3060	-	-	X	-
MRT 3570	-	-	X	-
MRT 3570 ES	-	-	X	-
MRT-X 2260	-	-	X	-
MRT-X 2570	-	-	X	-
MRT-X 2660	-	-	X	-
MRT-X 3060	-	-	X	-
MRT-X 3570	-	-	X	-
MRT-X 3570 ES	-	-	X	-

MANDATORY MACHINE EQUIPMENT: ×






SWING JIB



- Single-hook jib fitted with a 15°/15° rotation.
- Hydraulic rotation for more accuracy.
- Simple & strong attachment.
- Homologated, rotating self locking hook.

[The 3D picture at the top of this page is the reference PO 600 / 2500 - 784641].

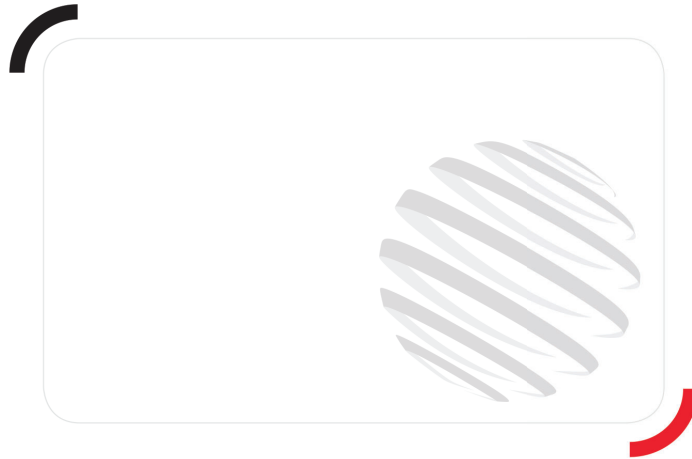
- Easy load placement directly from the cab.
- Especially interesting to place loads in narrow spaces.
- Improves efficiency-less time wasted placing the machine.
- Placement through rotation, not side shift = load moves backward when the jib swings.

	PO 600 / 2500	PO 1000 / 1500	PO 2000 / 1000
Distance to center of gravity (mm)	720	450	243
Max. outreach (mm)	2500	1500	1000
Capacity (kg)	600	1000	2000
Overall weight (kg)	320	275	255
Overall height (mm)	842	1056	842
Overall length (mm)	2874	1874	1374
Width (mm)	830	830	830
Machine Equipment			
Rotation 1 (°)	15	15	15
Rotation 2 (°)	15	15	15

Machines compatibility

Reference number	784641	784642	784643
MT 730 H	X	X	X
MT 735 75D ST5	X	X	X
MT 930 H	X	X	X
MT 930 HA	X	X	X
MT 935 75D ST5	X	X	X
MT 1135 75 D	X	X	X
MT 1135 H 100D	X	X	X
MT 1335 75D ST5	X	X	X
MT 1335 100D ST5	X	X	X
MT 1335 H 75D ST5	X	X	X
MT 1335 H 100D ST5	X	X	X
MT 1335 HA 75D ST5	X	X	X
MT 1335 HA 100D ST5	X	X	X
MT 1440 A	X	X	X
MT 1440 easy ST5	X	-	-
MT 1440 HA	X	X	X
MT 1840 A	X	X	X
MT 1840 easy ST5	X	X	X
MT 1840 HA	X	X	X
MT-X 733	X	X	X
MT-X 1033	X	X	X
MT-X 1440	X	X	X
MT-X 1440 A	X	X	X
MT-X 1840	X	X	X
MT-X 1840 A	X	X	X

MANDATORY MACHINE EQUIPMENT: 



MANITOU GROUP ATTACHMENTS

Head Office

B.P. 249 - 430 rue de l'Aubinière
44150 Ancenis Cedex - France
Tel: +33 (0)2 40 09 10 11 - Fax: +33 (0)2 40 09 10 97
www.manitou.com



This publication provides a description of the configuration versions and options for Manitou products, which may differ for equipment. The equipment presented in this brochure may be part of a series, as an option, or it may not be available, depending on the versions. Manitou reserves the right, at any time and without notice, to amend the specifications described and represented. The specifications provided do not bind the manufacturer. For more details, please contact your Manitou agent. This is not a contractually binding document. The presentation of the products is not contractually binding. List of specifications non-exhaustive. The logos as well as the visual identity of the company are owned by Manitou and cannot be used without authorisation. All rights reserved. The photos and diagrams contained in this brochure are only provided for consultation and information purposes.
MANITOU BF SA - Limited company with board of directors - Share capital: 39,668,399 euros - 857 802 508 RCS Nantes