



EUROPEAN PRODUCT RANGE 2024



READY TO CHANGE YOUR WORLD.

We are HD Hyundai Construction Equipment Europe and sell to more than 30 countries across Europe, through a network of over 140 dealers. Specialising in excavators, wheel loaders and now articulated dump trucks, we are a division of the global brand that is synonymous with durability and reliability.

Supported by rigorous research and testing, quality and innovation are at the heart of everything we do. And as HD Hyundai Construction Equipment continues to invest heavily in innovative engineering and smart technology, our European customers will continue to benefit from world-class manufacturing with local expertise, into the future.

CONTENTS

| | | | |
|------------------------------|----|-------------------------------|----|
| HW100A NEW | 04 | Crawler Excavators | 12 |
| HW65A NEW | 06 | Wheel Loaders | 14 |
| HX65A NEW | 08 | Wheeled Excavators | 16 |
| HX A-SERIES NEW | 10 | Articulated Dump Trucks | 18 |
| | | Compact Excavators | 20 |
| | | Service and Backup | 22 |

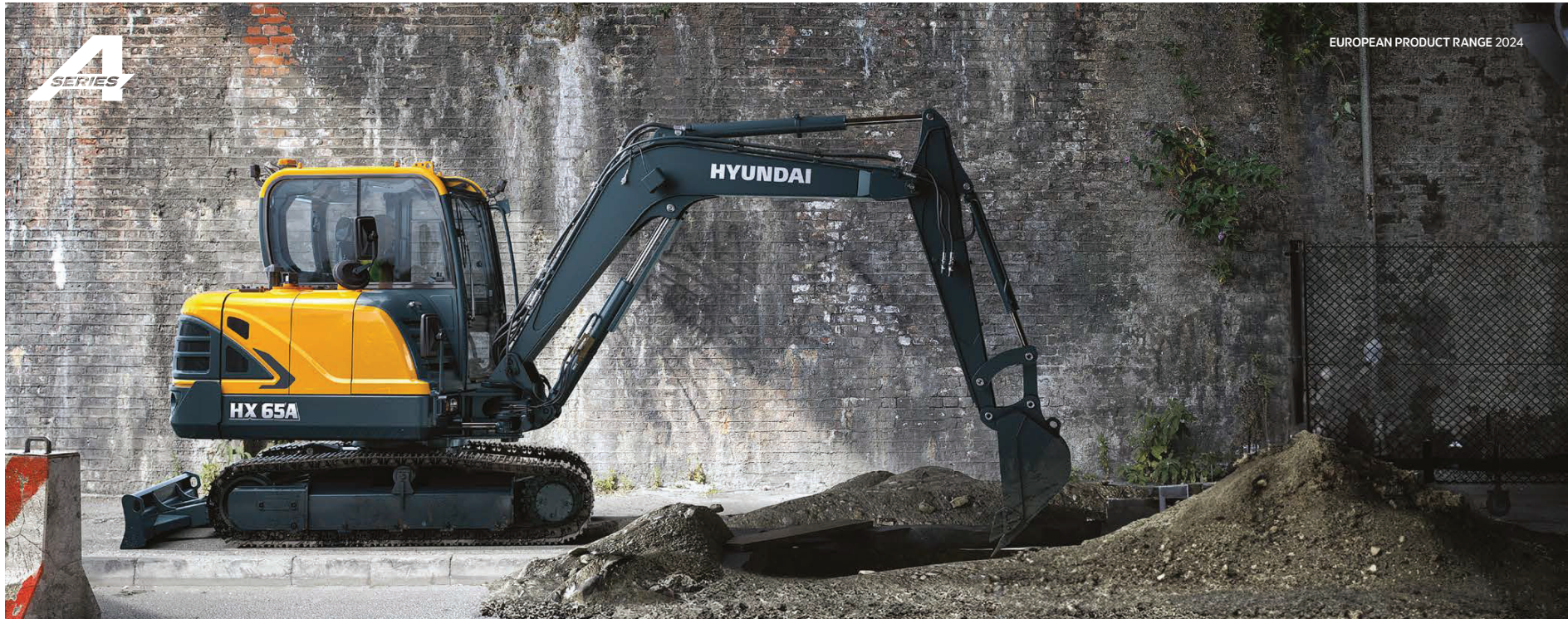
NEW

HX65A

TRACKED EXCAVATOR

The new HX65A is the latest model to join our compact excavator machine line-up and is ideal for working in smaller construction sites.

The 6.5-tonne machine comes with our eco-friendly Stage V Hyundai engine which enhances fuel efficiency, while optimising performance. With full track guards and wet track links as variant, you're assured of less damage to the undercarriage and smooth operation with reduced noise. And with extreme climate testing to -40°C and + 80°C, the HX65A is an exceptionally sturdy construction machine built for tough applications.



EUROPEAN PRODUCT RANGE 2024

A
SERIES

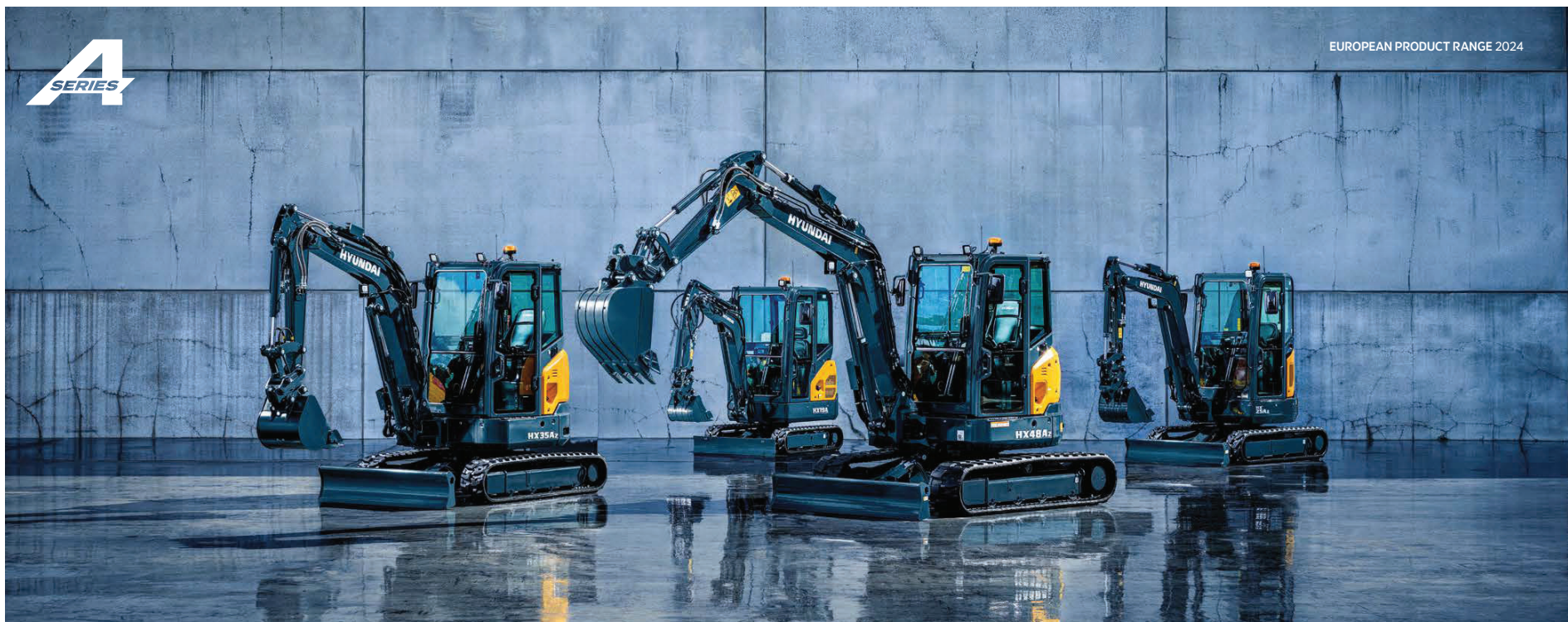
NEW

HX A-SERIES

COMPACT EXCAVATOR RANGE

Introducing our new range of award-winning mini excavators.

Available soon, these eight new A-Series machines are between 1.7 and 5.5-tonnes and feature a distinctive new design. Three models have already won the prestigious Red Dot Design Award. The 3.5-5.5-tonne models feature a tilting cab, while the over 4-tonne models have a new hydraulic system. All models can be configured with proportional joystick controls and quick-coupler piping.



CRAWLER EXCAVATORS

Our new Stage V A-Series crawler excavators are ready to build your world. From 13 - 52-tonnes, with the most powerful engines in their class, they're all fully equipped for any big digging, lifting and loading application. All models feature a Long Carriage (LC) design and with spacious cabs, tough exteriors and advanced safety features, they can easily handle whatever the job site throws at you.



| | HX130A LCR | HX140A L | HX145A LCR | HX160A L | HX180A L | HX210A L / NL | HX220A L |
|--------------------------|---|--|---|---|---|---|---|
| Operating weight | 13445 kg | 14405 kg | 15430 kg | 17695 kg | 18665 kg | 22150 / 22800 kg | 22100 kg |
| Max power | 55 kW (74 hp) | 100 kW (134 hp) | 100 kW (134 hp) | 115 kW (155 hp) | 115 kW (155 hp) | 142 kW (190 hp) | 145 kW (195 hp) |
| Bucket capacity | 0.50 m ³ - 0.61 m ³ | 0.5 m ³ - 0.77 m ³ | 0.50 m ³ - 0.77 m ³ | 0.73 m ³ - 0.96 m ³ | 0.73 m ³ - 0.96 m ³ | 0.80 m ³ - 1.34 m ³ | 0.80 m ³ - 1.34 m ³ |
| Breakout force | 97.1 kN | 102.9 kN | 102.9 kN | 126.4 kN | 126.4 kN | 152.0 kN | 152.0 kN |
| Max digging depth | 5640 mm | 5830 mm | 5940 mm | 6530 mm | 6530 mm | 7610 mm | 11760 mm |

| | HX235A LCR | HX260A L | HX300A L | HX330A L | HX380A L | HX480A L | HX520A L |
|--------------------------|---|---|---|---|---|--|--|
| Operating weight | 24000 kg | 27000 kg | 30730 kg | 33750 kg | 39100 kg | 50690 kg | 52048 kg |
| Max power | 145 kW (195 hp) | 173 kW (232 hp) | 198 kW (265 hp) | 242 kW (325 hp) | 283 kW (380 hp) | 300 kW (402 hp) | 300 kW (402 hp) |
| Bucket capacity | 0.80 m ³ - 1.34 m ³ | 0.80 m ³ - 1.34 m ³ | 1.27 m ³ - 1.85 m ³ | 1.44 m ³ - 2.10 m ³ | 1.46 m ³ - 2.32 m ³ | 1.38 m ³ - 3.2 m ³ | 1.38 m ³ - 3.2 m ³ |
| Breakout force | 152.0 kN | 178.5 kN | 192.2 kN | 217.7 kN | 228.5 kN | 247.1 kN | 247.1 kN |
| Max digging depth | 6490 mm | 7550 mm | 14740 mm | 8210 mm | 8220 mm | 12020 mm | 11870 mm |



SERVICE AND BACKUP

With a network of over 140 dealers across 30 European countries, Hyundai's service and backup is second to none.

From buying your machine with quick and easy financing and insurance, to extended protection products that will protect your Hyundai machine for life. Our service engineers offer the best repair & maintenance service by attending the Hyundai Academy to keep their knowledge up to date.

Our European Parts Distribution Centre is located in Belgium to offer immediate support for dealers and customers, from

receiving orders to picking, packing and shipment. The warehouse houses over 125,000 items and has over 12,000 m² in storage space. When it comes to optimising machine uptime, HI-MATE, our telematics remote management system gives you access to vital service and diagnostic information anywhere in the world.

If you're looking to finance construction equipment, you can count on Hyundai Finance to provide the best solution. We offer quick and easy financing, with customised payment plans to suit everyone.

HYUNDAI WARRANTIES

HD Hyundai Construction Equipment offers one of the strongest warranty programmes in the industry, providing you not only with peace of mind but also an added value to your product.

Standard Warranties: Your new machine comes with a 2-year, 3000 hour standard warranty. This protects you from repair costs and offers added value when trading your machine in.

Extended Warranties: For added protection we offer a variety of Extended Warranty Packages to suit your machine and financial preferences. Our programme allows you to cover your machine up

to a total of 5 years or 10,000 operating hours with the choice of covering the full machine or only the main components.

Used Equipment Warranty: Our Hyundai Used Machine Warranty programme protects your used machine from sudden or unforeseen breakdowns that occur out of the initial factory warranty period. We have tailored the programme to your needs with 2 levels of cover: Power covers components such as engine, transmission and hydrostatic pump and Plus, which covers hydraulic pumps, valves and cylinders.



Specifications and design are subject to change without notice. Pictures of HD Hyundai Construction Equipment Europe products may show other than standard equipment.

HD Hyundai Construction Equipment Europe nv, Hyundailaan 4, 3980 Tessenderlo, Belgium.
Tel: +32 14 56 22 00 Fax: +32 14 59 34 05

Contact your HD Hyundai dealer.
hyundai-ce.eu/en/dealer-locator



HY-CE-000323. 11/2023. EN. ISSUE 5

 **HD HYUNDAI**