

RANGE
ATJE
100 % electric



Take a look and find out
more information
on manitou.com

 **MANITOU**
HANDLING YOUR WORLD

Making operators and their environment safe

Manitou is committed to design machines that provide optimum safety for users.

- **Pedal presence in basket**
Activation of the pedal presence is required to make any movement on the machine.
- **Basket overload and tilt sensor**
Audible and visual indicators are provided if the basket is overloaded or in case of the slope is too important.
- **Double rail and meshed floor**
The guarantee of operator protection and full visibility of the working environment.
- **Electric emergency pump**
To enable efficient and rapid assistance.
- **Peace of mind**
The battery is empty and you need to collect the machine from the site? Activate the safety mat and you can proceed to load the platform.

Have you thought about SPS?
(Secondary Protection System)

The SPS is a safety solution for the operator and is activated in the event of a crush or discomfort of the operator. Its activation is multi-directional to guarantee optimal safety. Finally, the thickness of the cable allows the operator to have full visibility of the controls.



Access the Getting Started videos using the QR Code on the machine
Reduce Risks helps you to use your machines safely





Significant reduction in your operating costs

Choosing an electric aerial work platform is a promise to reduce the overhead costs of your investment. A powerful, robust and cost-optimised machine.



How can I optimise the life of my battery* ?

There are a few good practice rules to know in order to optimise the life of the batteries :

- Never discharge your batteries completely
 - Avoid partial charges
- Perform maintenance charges
- Check the water level regularly

* Visualise your battery data thanks to CAN feedback

- **Low maintenance**
Reduced maintenance costs, thanks in particular to the reduction in the number of components.
- **Basket durability**
With its galvanised finish, removable floor and protected control panel, you can rely on a basket designed to last.
- **Easy access to components**
Quick access to hydraulic cables, hoses as well as the batteries thanks to fork pockets to easily handling batteries.
- **Reduced consumption**
Its 100% electric power will reduce your energy costs thanks to the low price of electricity compared to the price of diesel.
- **Optimisation of resale value**
On resale, benefit from an unbeatable selling price thanks to a lower cumulative number of hours than a thermic model. Hour displayed = Hour worked.
- **Easy transport**
One-point slinging without a spreader bar for safe transport.



Connected solutions

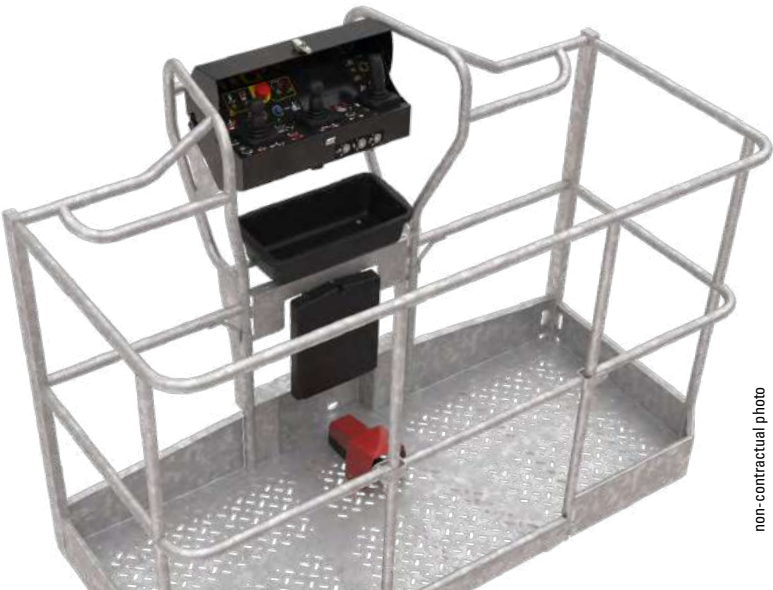
Your aerial platform has something special: thanks to connectivity, you can follow its position in real time and optimise the operational follow-up of your equipment.

- **View in real time**
Manage your fleet remotely and benefit from a wealth of information about your machines accessible on your PC, tablet or smartphone.
- **Anticipate maintenance**
Save time: share your alerts directly with the technician to anticipate parts and reduce response time.
- **Analyse performance**
View the performance of your machines in a graphical format that is easy to follow and interpret.

Protect your equipment and control access
As an option you can manage driving authorisations and control operator access to your machines to ensure their safety and that of the workplace.

Driving an ATJ-E has never been easier

- **Ergonomic and harmonised controls**
Ergonomic and standardised basket and lower control station for the entire ATJ range.
- **Intuitive human/machine interface**
A large colour screen displays information via an alert system. The operator knows the remaining autonomy of the machine (in hours).
- **Easy to charge**
The integrated charger located on the turret allows you to easily recharge your machine using a standard 230V plug.



4 simultaneous movements

4 wheel drive

2 maintenance-free asynchronous electric motors



Take advantage of a basket console with a display to give the user a range of useful information.



The large screen at the lower control box offers additional information to the top control box for operator and allows technicians to carry out a quick diagnosis, consult the machine memory and many other functions.

Did you know ?

Using a code, you can modify certain options to adapt the machine to the needs of your customers (flashing light on contact, flashing light on movement, all movement beep...).

Reinforced structure The market reference

Our customers praise the reinforced design and durability of our lifting solutions. Regardless of the product chosen, the articulation heights and working outreach set the standard in their category.

Simplified electrical architecture

The 200 ATJ-E is a machine with an architecture of unparalleled simplicity and reliability on the market. Equipped with only two electric motors well protected inside the machine, guaranteeing low maintenance costs.

Galvanised basket With removable floor

The galvanization of our baskets allows a better durability in time and to avoid repainting (TCO). The removable floor allows for quick replacement in case of damage.

Turret

Turret rotation is via a hydraulic motor whose speed varies according to the extension of the telescope.

Super impact resistant cover

Maximum Tilt
4°
Longitudinal and lateral

Did you say versatility ?

OxygenbyManitou is the new label for eco-responsible machines. Concerned about CSR criteria, the Manitou brand has a solution adapted to indoor and outdoor work. Discover without further delay our 200 ATJE, a 20-metre articulated boom lift, 100% electric.

OXYGEN
by MANITOU



Folded dimensions (LxWxH) :

6,06 x 2,32 x 2,38 m

7100 kg

One-point slinging

Without a spreader bar for easy lifting of the machine.

UNEQUAL
GROUND
CLEARANCE



The off-road range

Our chassis are perfectly suited for off-road use. The design of the chassis, the high ground clearance and the active oscillating axle guarantee excellent handling on off-road terrain.

Optimal performance

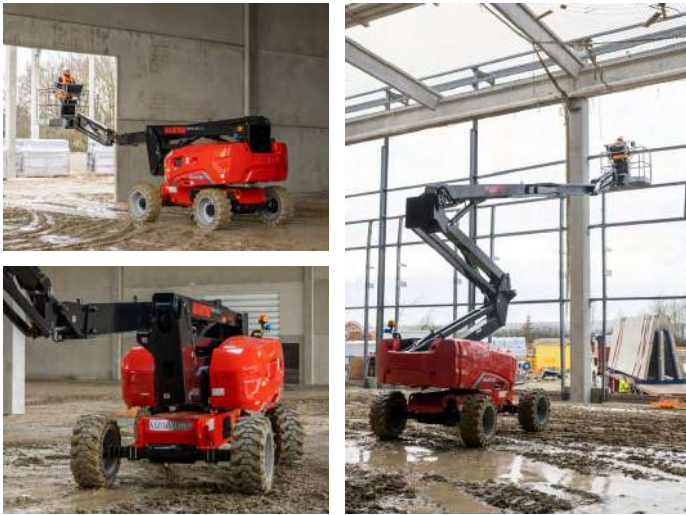
Since its inception, Manitou has equipped its rough-terrain aerial work platforms with drive axles. These highly reliable components are perfectly suited to the toughest conditions and offer superior performance to other technologies.





Take a deep breath

Manitou introduces its Oxygen label. The label introduces all Manitou solutions aimed at reducing environmental impact. It responds to new requests for «zero emission» projects, to support companies in internal policies aimed at reducing their carbon impact. Or even, to offer machines for applications in quiet areas.



100% Manitou DNA

Investing in a Manitou electric aerial work platform means enjoying the benefits of electric power and having a machine that is designed to work in rough conditions.

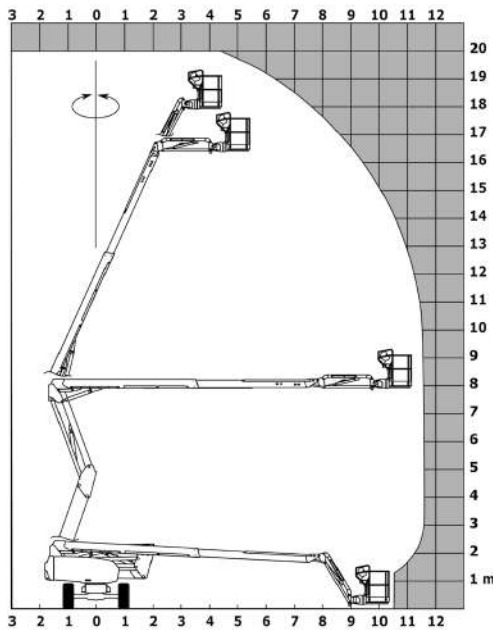
100% versatile

Technology and tyres fully adapted for indoor use. 4-wheel drive, oscillating axle and high ground clearance to adapt perfectly to the most difficult conditions.

200 ATJ-E



Basket capacity (kg)	230
Working height (m)	20
Platform height (m)	18
Working offset (m)	11.57
Overhang (m)	7.90
Platform dimensions (Lxwxh)	8.34 x 2.32 x 2.46
Dimensions stowed (Lxwxh)	6.06 x 2.32 x 2.71
Basket dimensions (Lxw)	1.5 X 0.75
Battery power (V / Ah)	48 / 460
Tyres type	Cured-on non marking
Total weight (kg)	7100



Number of operators



Gradeability



Turret rotation



Driving & Steering wheels

Why lead batteries ?

They have several advantages. Its low replacement cost compared to other types of battery technology and finally, its recyclability rate (98%) completes this product which is intended to be non-polluting !

Our lead traction batteries have a lifetime of 1500 cycles*.

* 1 cycle = 1 charge

Does the number of electric motors affect the performance of the machine ?

The number of electric motors is not related to the performance of the machine. More components often mean more maintenance and associated costs! To reduce these costs, we have designed a very simple machine with reliable technology. Only one motor in the chassis for translation movements and one motor in the turret for elevation movements.

A wide range of option

To access all the options, ask your Manitou contact for advice.



Security package
Helmet and safety harness for safe working.



Basket 1.8 m with lateral door
Manitou offers a wider basket with a side door for easy access.



On-board centralized filing
Benefit from an electric pump and an integrated tank for quick water level recovery.



230 V European type electric plug with differential circuit breaker
Possibility of charging material in the basket.



“

What is important as a fleet manager is the turnover rate. That's why I need a machine that is easy to maintain and that allows me to anticipate maintenance! All of this while meeting our safety regulations and being versatile enough to be rented anywhere.

Your dealer



This publication describes the versions and configuration possibilities of Manitou products which may differ in equipment. The equipment shown in this brochure may be standard, optional or not available depending on the version. Manitou reserves the right to change the specifications described and shown at any time without notice. The specifications shown are not binding on the manufacturer. For more details, contact your Manitou dealer. Non contractual document. The logos and visuals of the company are the property of Manitou and may not be used without permission. All rights reserved. The photos and diagrams contained in this brochure are provided for reference purposes only. Manitou BF SA - Public limited company with a Board of Directors - Share capital: 39,547,824 euros - 857 802 508 RCS Nantes

©Manitou ©Adobe stock