

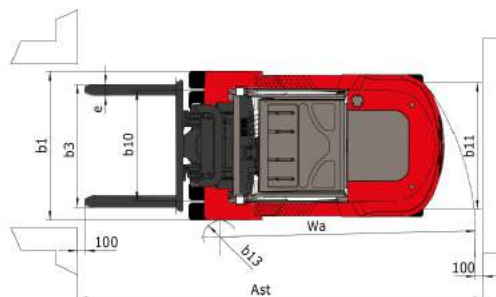
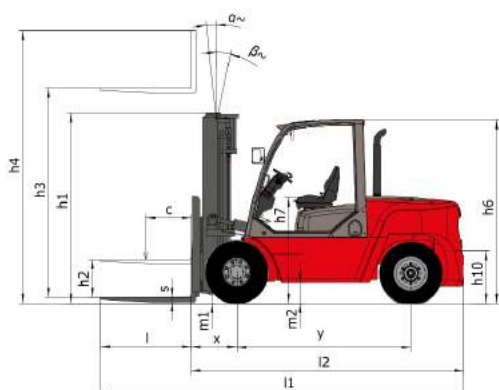
Technical sheet

MI 70 D

Masted Forklift Trucks



	Technical characteristics	Metric
1.1	Manufacturer	Manitou
1.2	Model	MI 70 D
1.3	Type of traction	Diesel
1.4	Type of operation	Seated
1.5	Q - Rated capacity	7000 kg
1.6	c - Center of gravity of load	600 mm
1.8	x - Distance from the load bearing surface to the centre of the front axle	600000 mm
1.9	y - Wheelbase	2300 mm
Weight		
2.1	Weight of truck in working order	10110 kg
2.2	Laden weight on front/rear axle	15290 kg / 1820 kg
2.3	Unladen weight on front/rear axle	4120 kg / 5990 kg
Wheels		
3.1	Tyre equipment: bandage (V), PPS (SE), inflatable tyre (L)	mft_Inflatable
3.5	Number of front wheels (x)	4x / 2
3.6	b10 - Front track	1.49 mm
3.7	b11 - Rear track	1.70 mm
Dimensions		
4.1	α / β - Front/Rear mast angle	6 ° / 12 °
4.2	h1 - Height (mast lowered)	2500 mm
4.3	h2 - Free lift	160 mm
4.4	h3 - Lift height (Duplex mast)	3000 mm
4.5	h4 - Height of extended mast	4420 mm
4.7	h6 - Height of driver protection (cab)	2430 mm
4.8	h7 - Height of seat	1350 mm
4.12	h10 - Height of towing coupling	710 mm
4.19	l1 - Total length	4800 mm
4.20	l2 - Length to fork heel	3580 mm
4.21	b1 - Overall width - Single/twinned wheels	1990 mm / -
4.22	e / s / l - Fork dimensions	1220 x 150 x 65
4.23	Fork carriage to DIN 15173 A/B	FEM 4A
4.24	b3 - Width of fork clamp	1700 mm
4.31	m1 - Ground clearance under mast	190 mm
4.33	Ast - Aisle width for 1000 x 1200 pallet widthwise	5240 mm
4.34	Ast - Aisle width for 800 x 1200 pallet lengthwise	5380 mm
4.35	Wa - Turning radius	3330 mm
4.36	b13 - Inner turning radius	1220 mm
Performances		
5.1	Speed of travel laden / unladen	18 km/h / 24 km/h
5.2	Lifting speed laden / unladen	0.36 m/s / 0.41 m/s
5.3	Lowering speed laden / unladen	0.48 m/s / 0.42 m/s
5.5	Nominal pulling force laden / unladen	6280 daN / 3600 daN
5.7	Maximum ramp laden / unladen	34 % / -
5.10	Service brake	Hydraulic
Engine		
7.1	Engine manufacturer / Type	Deutz - TCD 3.6L 4 / 3B / Tier IV Final
7.2	Useful power	55.40 kW
7.4	Number of pistons / Capacity	4 / 3600 cm ³
Miscellaneous		
8.2	Working hydraulic pressure for attachments	195 bar
8.3	Oil flow rate for attachments	55 l/min
8.4	Measured/guaranteed mean noise level at the ear of the operator	83 dB(A)



Characteristics of masts and residual capacities

Duplex Total Visibility		FVD 30	FVD 33	FVD 36	FVD 40	FVD 45	FVD 50
Lift height	mm	3000	3300	3600	4000	4500	5000
Height (mast lowered)	mm	2500	2650	2800	3000	3300	3550
Free lift	mm	160	160	160	160	160	160
Height of extended mast	mm	4167	4467	4767	5167	5667	6167
Residual Capacity without attachment (Industrial load chart)	kg	7000	7000	7000	7000	7000	7000
Residual Capacity with integrated side shift (Industrial load chart)	kg	6500	6500	6500	6500	6500	6500
Forward/backward mast tilt angle	°	6 / 12	6 / 12	6 / 12	6 / 12	6 / 6	6 / 6

Duplex Free Lift		FLD 30	FLD 33	FLD 36	FLD 40
Lift height	mm	3000	3300	3600	4000
Height (mast lowered)	mm	2450	2600	2750	2950
Free lift	mm	1335	1485	1635	1835
Height of extended mast	mm	4115	4415	4715	5115
Residual Capacity without attachment (Industrial load chart)	kg	7000	7000	7000	7000
Residual Capacity with integrated side shift (Industrial load chart)	kg	6500	6500	6500	6500
Forward/backward mast tilt angle	°	6 / 12	6 / 12	6 / 12	6 / 12

Triplex Free Lift		FLT 45	FLT 48	FLT 50	FLT 55	FLT 60
Lift height	mm	4500	4800	5000	5500	6000
Height (mast lowered)	mm	2725	2825	2875	3075	3225
Free lift	mm	1500	1600	1672	1800	200
Height of extended mast	mm	5735	6035	6213	6785	7235
Residual Capacity without attachment (Industrial load chart)	kg	6400	6300	6300	6100	5500
Residual Capacity with integrated side shift (Industrial load chart)	kg	5900	5800	5800	5600	5000
Forward/backward mast tilt angle	°	6 / 6	6 / 6	6 / 6	3 / 6	3 / 6



Siège Social
430 rue de l'Aubinière - 44150 Ancenis Cedex - France
Tel: +33(0)2 40 09 10 11 - Fax: +33 (0)2 40 09 10 97
www.manitou.com



This brochure describes versions and configuration options for Manitou products which may be fitted with different equipment. The equipment described in this brochure may be standard, optional or not available depending on version. Manitou reserves the right to change the specifications shown and described at any time and without prior warning. The manufacturer is not liable for the specifications given. For more information, contact your Manitou dealer. Non-contractual document. Product descriptions may differ from actual products. List of specifications is not comprehensive. The logos and visual identity of the company are the property of Manitou and may not be used without authorisation. All rights reserved. The photos and diagrams contained in this brochure are provided for information only.

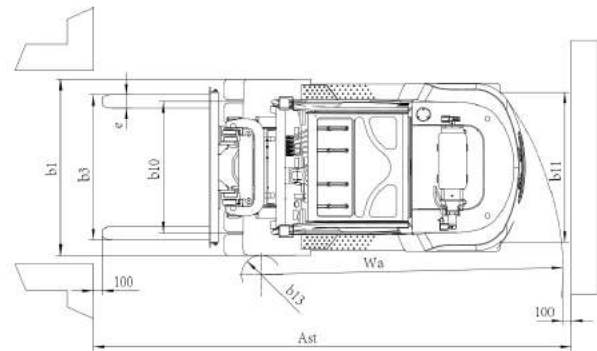
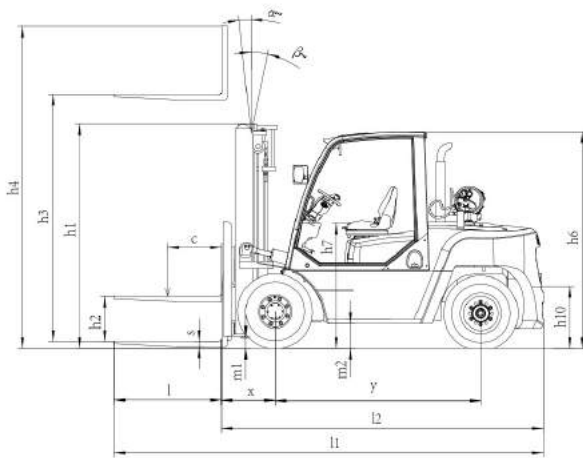
MANITOU BF SA - Limited company with board of directors - Share capital: 39,547,824 euros - 857 802 508 RCS Nantes

Technical sheet

MI 70 G

Masted Forklift Trucks

	Technical characteristics	Metric
1.1	Manufacturer	Manitou
1.2	Model	MI 70 G
1.3	Type of traction	LPG gas
1.4	Type of operation	Seated
1.5	Q - Rated capacity	7000 kg
1.6	c - Center of gravity of load	600 mm
1.8	x - Distance from the load bearing surface to the centre of the front axle	603 mm
1.9	y - Wheelbase	2300 mm
Weight		
2.1	Weight of truck in working order	9595 kg
2.2	Laden weight on front/rear axle	14830 kg / 1765 kg
2.3	Unladen weight on front/rear axle	3910 kg / 5685 kg
Wheels		
3.1	Tyre equipment: bandage (V), PPS (SE), inflatable tyre (L)	Solid cushion
3.2	Size of front wheels	8.25-15-14PR
3.3	Size of rear wheels	8.25-15-14PR
3.5	Number of front wheels (x)	4x / 2
3.6	b10 - Front track	1.49 mm
3.7	b11 - Rear track	1.70 mm
Dimensions		
4.1	α / β - Front/Rear mast angle	6° / 12°
4.2	h1 - Height (mast lowered)	2500 mm
4.3	h2 - Free lift	160 mm
4.4	h3 - Lift height (Duplex mast)	3000 mm
4.5	h4 - Height of extended mast	4420 mm
4.7	h6 - Height of driver protection (cab)	2430 mm
4.8	h7 - Height of seat	1350 mm
4.12	h10 - Height of towing coupling	430 mm
4.19	l1 - Total length	4804 mm
4.20	l2 - Length to fork heel	3600 mm
4.21	b1 - Overall width - Single/twinned wheels	1990 mm / -
4.22	e / s / l - Fork dimensions	1220 x 150 x 65
4.23	Fork carriage to DIN 15173 A/B	FEM4A
4.24	b3 - Width of fork clamp	1700 mm
4.31	m1 - Ground clearance under mast	190 mm
4.33	Ast - Aisle width for 1000 x 1200 pallet widthwise	5262 mm
4.34	Ast - Aisle width for 800 x 1200 pallet lengthwise	5397 mm
4.35	Wa - Turning radius	3350 mm
4.36	b13 - Inner turning radius	1222 mm
Performances		
5.1	Speed of travel laden / unladen	27 km/h / 31 km/h
5.2	Lifting speed laden / unladen	0.43 m/s / 0.46 m/s
5.3	Lowering speed laden / unladen	0.48 m/s / 0.42 m/s
5.5	Nominal pulling force laden / unladen	5900 daN / 2750 daN
5.7	Maximum ramp laden / unladen	27 % / 27 %
5.10	Service brake	Hydraulic
Engine		
7.1	Engine manufacturer / Type	PSI / 3A
7.2	Useful power	74 kW
7.4	Number of pistons / Capacity	6 / 4300 cm ³
Miscellaneous		
8.2	Working hydraulic pressure for attachments	195 bar
8.3	Oil flow rate for attachments	120 l/min
	Average weighted acceleration on driver's body (standard NF EN 13059)	0.90 m/s ²



Characteristics of masts and residual capacities

Duplex Total Visibility		FVD 30	FVD 33	FVD 36	FVD 40	FVD 45	FVD 50
Lift height	mm	3000	3300	3600	4000	4500	5000
Height (mast lowered)	mm	2500	2650	2800	3000	3300	3550
Free lift	mm	160	160	160	160	160	160
Height of extended mast	mm	4167	4467	4767	5167	5667	6167
Residual Capacity without attachment (Industrial load chart)	kg	7000	7000	7000	7000	7000	7000
Residual Capacity with integrated side shift (Industrial load chart)	kg	6500	6500	6500	6500	6500	6500
Forward/backward mast tilt angle	°	6 / 12	6 / 12	6 / 12	6 / 12	6 / 6	6 / 6

Duplex Free Lift		FLD 30	FLD 33	FLD 36	FLD 40
Lift height	mm	3000	3300	3600	4000
Height (mast lowered)	mm	2450	2600	2750	2950
Free lift	mm	1335	1485	1635	1835
Height of extended mast	mm	4115	4415	4715	5115
Residual Capacity without attachment (Industrial load chart)	kg	7000	7000	7000	7000
Residual Capacity with integrated side shift (Industrial load chart)	kg	6500	6500	6500	6500
Forward/backward mast tilt angle	°	6 / 12	6 / 12	6 / 12	6 / 12

Triplex Free Lift		FLT 45	FLT 48	FLT 50	FLT 55	FLT 60
Lift height	mm	4500	4800	5000	5500	6000
Height (mast lowered)	mm	2725	2825	2875	3075	3225
Free lift	mm	1500	1600	1672	1800	2000
Height of extended mast	mm	5735	6035	6213	6785	7235
Residual Capacity without attachment (Industrial load chart)	kg	6400	6300	6300	6100	5500
Residual Capacity with integrated side shift (Industrial load chart)	kg	5900	5800	5800	5600	5000
Forward/backward mast tilt angle	°	6 / 6	6 / 6	6 / 6	3 / 6	3 / 6



Siège Social
430 rue de l'Aubinière - 44150 Ancenis Cedex - France
Tel: +33(0)2 40 09 10 11 - Fax: +33 (0)2 40 09 10 97
www.manitou.com



This brochure describes versions and configuration options for Manitou products which may be fitted with different equipment. The equipment described in this brochure may be standard, optional or not available depending on version. Manitou reserves the right to change the specifications shown and described at any time and without prior warning. The manufacturer is not liable for the specifications given. For more information, contact your Manitou dealer. Non-contractual document. Product descriptions may differ from actual products. List of specifications is not comprehensive. The logos and visual identity of the company are the property of Manitou and may not be used without authorisation. All rights reserved. The photos and diagrams contained in this brochure are provided for information only.

MANITOU BF SA - Limited company with board of directors - Share capital: 39,547,824 euros - 857 802 508 RCS Nantes