



BUCKET RANGE





Concrete Mixing Bucket (BMC)	38
Sugar Beet Bucket (BSB)	40
Silage Facing Bucket (CRS)	41
Bucket 4 in 1 (CB4x1)	42
Agricultural Bucket (CBA)	44
Environment Bucket -EN- (CBA)	46
High Capacity Agricultural Bucket (CBA) NEW	47
Light Material Bucket MHT Versions (CBA)	48
Construction Bucket (CBC)	50
Agricultural Multifunction Grab Bucket -MS- (CBG)	52
Agricultural Multifunction Grab Bucket -FO- (CBG)	54
Environment Grab Bucket -EN- (CBG)	56
High Capacity Agricultural Grab Bucket -MS- (CBG)	57
General Purpose Bucket (CBR)	58
General Purpose Bucket MHT Versions (CBR)	60
Shear Buckets (SHB)	62



CONCRETE MIXING BUCKET



- A ready-to-use mix within 3 minutes!
- Replaceable mixing blades for low running costs.
- Delivered with cable wheel- can be used even on machines without electric connexion on the boom.



1.5m flexible tube for better unloading control



Bag opener incorporated into the cover



Left side distribution controlled hydraulically for maximum safety



	BMC 500
Capacity (L)	500
Width (mm)	1750
Empty weight (kg)	753

Machine compatibility	
Reference	757637
MT 1135	x
MT 1335	x
MT 1440	x
MT 1840	x

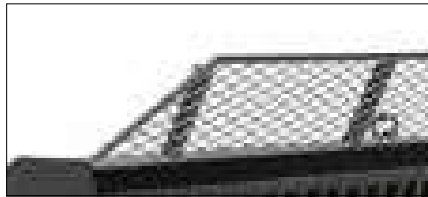
MANDATORY MACHINE EQUIPMENT:  +  (recommended)



SUGAR BEET BUCKET



- Attachment adapted to the handling of sugar beet and other root crops.
- Open-work structure made of Ø 20 mm steel bars.



Open-work spill guard: optimal visibility

	BSB 2450 / 2500
Capacity (L)	2500
Width (mm)	2450
Empty weight (kg)	520

Machine compatibility	
Reference	757953
MLT 635 <i>NewAg</i>	x
MLT-X 732	x
MLT-X 735	x
MLT 737 <i>NewAg</i>	x
MLT 741 <i>NewAg</i>	x
MLT 840	x
MLT 940 <i>NewAg</i>	x
MLT 1040	x

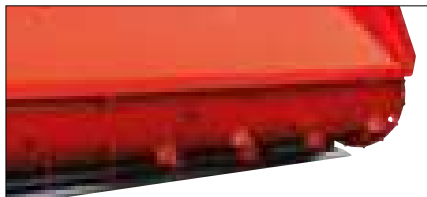
MANDATORY MACHINE EQUIPMENT: ✕



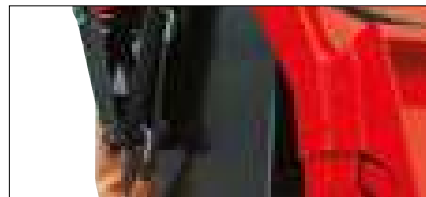
SILAGE FACING BUCKET



- Handling material with a density $\leq 1000 \text{ kg/m}^3$.
- Clean silage pit face- limits secondary fermentation.
- Lighten silage ready for distribution.
- Not suitable for full-length grass silage (> 10cm).
- Note : launch scheduled Summer 2019. May be temporarily unavailable.



Heavy duty hydraulic rotor with integrated motor



Hydraulic synchronisation: rotor rotation & arm movement

	CRS 2150 / 1650	CRS 2550 / 2000
Capacity (L)	1650	2000
Width (mm)	2150	2550
Empty weight (kg)	920	950

Machine compatibility		
Reference	52612542	52612539
MLT 625		
MLT 635 <i>NewAG</i>		
MLT-X 732		
MLT 733 <i>NewAG</i>		
MLT-X 735		
MLT 737 <i>NewAG</i>		
MLT 741 <i>NewAG</i>		
MLT 840		
MLT 940 <i>NewAG</i>		
MLT 1040		

MANDATORY MACHINE EQUIPMENT: +



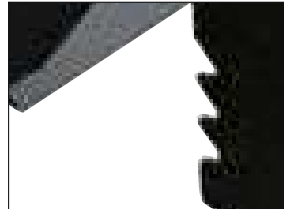
BUCKET 4 IN 1



- App-purpose bucket: load, dig, push, unload precisely with 1 single attachment!
- Handling material with a density $\leq 2100 \text{ kg/m}^3$.
- Interchangeable teeth for better longevity.
- (1): version dedicated to MT 420 with skid steer carriage option.



Rear counter blade for ground levelling



Sides fitted with "claws" for cylindrical object handling



Teeth dedicated to earth moving



	CB4x1 400L 1500	CB4x1 700L 1950	CB4x1 850L 2300	CB4x1 900L 2450
Capacity (L)	402	700	850	899
Width (mm)	1525	1950	2300	2450
Number of teeth	4	5	6	7
Weight (kg)	540	640	735	765

Machine compatibility				
Reference	52551750 (1) 52000785	751402	751401	751465
MLT 625		x		
MLT 635 <i>NewAg</i>				x
MLT 733 <i>NewAg</i>				x
MLT-X 735				x
MLT 737 <i>NewAg</i>				x
MLT 741 <i>NewAg</i>				x
MLT 840				x
MLT 845			x	x
MLT 940 <i>NewAg</i>				x
MT 420	x			
MT 625		x		
MT 733 Easy				x
MT 933 Easy				x
MT 1135				x
MT 1335				x
MT 1440			x	x
MT 1840			x	x

MANDATORY MACHINE EQUIPMENT: 

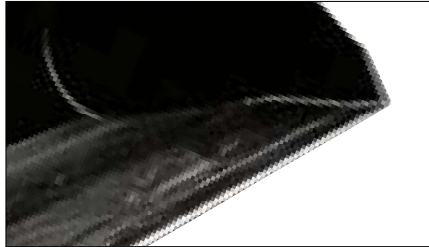


AGRICULTURAL BUCKET

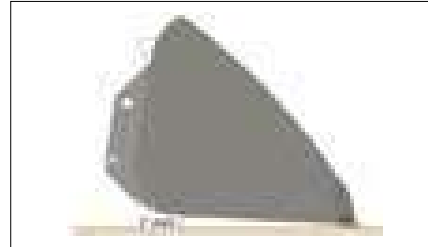


- Handling material with a density $\leq 1000 \text{ kg/m}^3$.
- Unique shape ensuring unmatched rigidity, perfect unloading and strongly limiting material loss.
- 400 HB welded cutting edge.
- (1): Optional 500 HB bolt-on wear plate for better longevity.





Complex shape for easy loading and unloading operations



3° angle between the bucket's bottom line & the bolted cutting edge for more longevity

* Italy only- bucket compliant with Italian road regulations

** For de-construction applications only

	CBA 1500L / 2050 DA	CBA 1700L / 2100	CBA 2000L / 2250	CBA 1500L / 2450	CBA 2000L / 2450	CBA 2500L / 2450	CBA 3000L / 2500
Capacity (L)	1500	1703	1970	1529	2010	2526	3023
Width (mm)	2050	2100	2250	2450	2450	2450	2500
Option	(1)		(1)	(1)	(1)	(1)	(1)
Weight (kg)	509	522	650	500	567	682	760

Machine compatibility							
Reference	653035 (1) 52000489	570549	790540 (1) 790541	570547 939411* (1) 570548	570551 939412* (1) 570552	570553 939413* (1) 570554	570555 939414* (1) 500701
	939391*	N/A	N/A	(1) 939388*	(1) 939389*	(1) 939390*	(1) 939415*
MLT 625	x						
MLT 630 <i>NewAG</i>		x	x		x		
MLT 635 <i>NewAG</i>				x	x	x	
MLT 730 <i>NewAG</i>		x	x		x		
MLT-X 732				x	x		
MLT 733 <i>NewAG</i>				x	x	x	
MLT-X 735				x	x	x	
MLT 737 <i>NewAG</i>				x	x	x	
MLT 741 <i>NewAG</i>				x	x	x	
MLT 840					x	x	x
MLT 845				x	x	x	x
MLT 940 <i>NewAG</i>					x	x	x
MLT 1040					x	x	x
MLA-T 533			x	x	x		
E-RECO	N/A	N/A	N/A	921279	N/A	N/A	N/A
MRT Easy				x**			
MRT Privilege +				x**			

MANDATORY MACHINE EQUIPMENT: ✕



ENVIRONMENT BUCKET



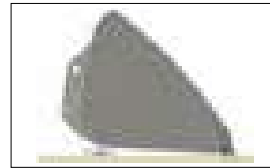
- Handling material with a density $\leq 1000 \text{ kg/m}^3$.
- Highly resistant design with innovative solutions.
- Extensive use of high resistance steel.



S355 stiffeners with 500HB additional wear pads



Flat bottom for more penetration into coherent materials (green waste etc.)



3° angle between the bucket's bottom line & the 500HB bolt-on cutting edge for more longevity.

	CBA 2450 / 2200 EN	CBA 2500 / 3200 EN
Capacity (L)	2224	3197
Width (mm)	2450	2500
Bolt-on cutting edge	Standard	Standard
Weight (kg)	910	1110

Machine compatibility		
Reference	52000524	52000125
MLT 635 <i>NewAg</i>	x	
MLT 733 <i>NewAg</i>	x	
MLT 737 <i>NewAg</i>	x	
MLT 741 <i>NewAg</i>	x	
MLT 840	x	
MLT 845 H	x	
MLT 961		x

MANDATORY MACHINE EQUIPMENT: ✕

NEW



HIGH CAPACITY AGRICULTURAL BUCKET



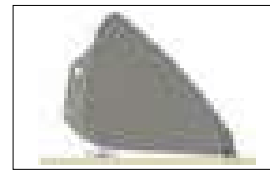
- Handling material with a density $\leq 1000 \text{ kg/m}^3$.
- Modern design with maximal rigidity & resistance.
- Integrated spill guard.



4 stiffeners with wear pad function



500HB bolt-on cutting edge (LDR) with 3° angle for more longevity



3° angle between the bucket's bottom line & the 500HB cutting edge for more longevity

	CBA 2500 / 4000 LDR	CBA 2700 / 4500 LDR
Capacity (L)	4007	4550
Width (mm)	2500	2700
Bolt-on cutting edge	Standard	Standard
Weight (kg)	1310	1400

Machine compatibility		
Reference	52603178	52000508
MLT 961	x	

MANDATORY MACHINE EQUIPMENT: ✕



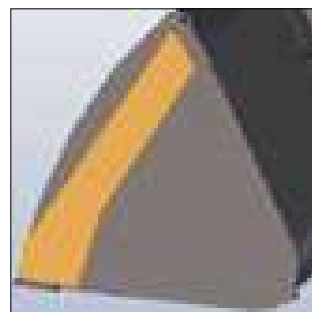
LIGHT MATERIAL BUCKET MHT VERSIONS



- High-resistance light material buckets adapted to the power of MHT heavy telehandlers.
- Max. density 1000kg/ m3.
- Strong attachments for a long lasting life.
- (1): 500HB bolted wear plate.



Strong structure with strengtheners



Reinforced sides

	CBA 2500 / 2000 LDR	CBA 3000 / 2500 LDR	CBA 4000 / 2500 LDR	CBA 2500 / 4000 LDR MHT	CBA 2940 / 6000 LDR
Capacity (L)	2000	3023	4078	4000	tbc
Width (mm)	2500	2500	2500	2500	tbc
Bolted wear plate	Standard	Standard	Standard	Standard	tbc
Weight (kg)	709	866	1035	1440	tbc

Machine compatibility					
Reference	744046	744047			
MHT-X 860	x	x			
E-RECO	939160	939161	939162	52000534	52623242
MHT 790	x	x	x		
MHT 1490	x				
MHT 10130				x	
MHT 10180				x	
MHT 10230				x	
MHT 12330					Upon request

MANDATORY MACHINE EQUIPMENT: ✕



CONSTRUCTION BUCKET

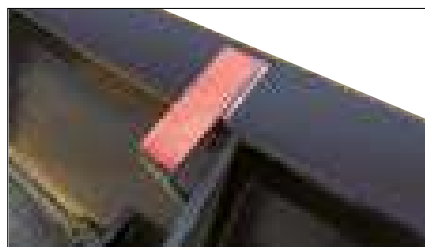


- THE bucket for all digging, soil or rubble handling applications.
- Handling material with a density $\leq 2100 \text{ kg/m}^3$.
- Interchangeable teeth for better longevity.
- (1): dedicated versions for machines equipped with an integrated side shift (TSDL).
- (2): version dedicated to MT 420 with skid steer carriage option





Teeth dedicated to earth moving



Level plate for more accuracy

	CBC 500L / 1500	CBC 650L / 1850	CBC 700L / 1950	CBC 750L / 2100	CBC 800L / 2250	CBC 900L / 2450
Capacity (L)	519	676	696	768	814	893
Width (mm)	1500	1850	1950	2100	2250	2450
Teeth	4	6	6	6	6	8
Weight (kg)	280	320	330	345	366	391

Machine compatibility						
Reference	654474	654473	654472	654475	654471	654470
	(2) 52000784	N/A	N/A	N/A	(1) 52000363	(1) 52000364
MLT 630 <i>NewAg</i>				x	x	
MLT 635 <i>NewAg</i>						x
MLT 730 <i>NewAg</i>				x	x	
MLT-X 732						x
MLT 733 <i>NewAg</i>						x
MLT-X 735						x
MLT 737 <i>NewAg</i>						x
MLT 741 <i>NewAg</i>						x
MLT 840						x
MLT 845						x
MT 420	x					
MT 625		x				
MT 733 Easy						x
MT 933 Easy						x
MT 1033 Easy					x	x
MT 1135						x
MT 1335						x
MT 1440			x		x	x
MT 1840					x	x

MANDATORY MACHINE EQUIPMENT: ✕



AGRICULTURAL MULTIFUNCTION GRAB BUCKET -MS-

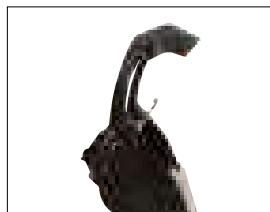


- Handling material with a density $\leq 1000 \text{ kg/m}^3$.
- Dismountable sides for better flexibility.
- 500HB bolted wear plate with 3° angle for a better longevity.
- Welded and reinforced grapple with rotation stops for intensive working conditions.





Construction-type pins with locking bolts and welded stiffeners



Complete jaw opening > 90° allows working flush with wall (except 790677)



Bolt-on wear plate for better longevity- 500HB

	CBG 1850 DA MS	CBG 2100 MS	CBG 2300 MS	CBG 2450 MS	CBG 2450 MS / MLT 845	CBG 2450 / 1700 MS
Capacity (L)	960	1090	1190	1270	1270	1695
Width (mm)	1850	2100	2300	2450	2450	2450
Teeth	6	7	7	7	7	9 + 2
Weight (kg)	630	681	720	742	744	895

Machine compatibility						
Reference	790302	790304	790306	790308	790677	52549720
MLT 625	x					
MLT 630 <i>NewAg</i>		x	x	x		
MLT 635 <i>NewAg</i>				x		x
MLT 730 <i>NewAg</i>		x	x	x		
MLT-X 732				x		
MLT 733 <i>NewAg</i>				x		x
MLT-X 735				x		x
MLT 737 <i>NewAg</i>				x		x
MLT 741 <i>NewAg</i>				x		x
MLT 840				x		x
MLT 845 St4					x	x
MLT 940 <i>NewAg</i>				x		x
MLT 1040				x		x
MLA-T 533			x	x		x

MANDATORY MACHINE EQUIPMENT:



AGRICULTURAL MULTIFUNCTION GRAB BUCKET -FO-



- Perfect tool for silage cutting & AG material handling (density <math>< 1000 \text{ kg/m}^3</math>).
- Dismountable sides for better flexibility.
- 500HB bolted wear plate with 3° angle for a better longevity.
- Welded and reinforced grapple with rotation stops for intensive working conditions.





Construction-type pins with locking bolts and welded stiffeners



Complete jaw opening > 90° allows working flush with wall



CBG 2450/1700: side teeth for a perfect silage cutting & holding

	CBG 1850 DA FO	CBG 2100 FO	CBG 2300 FO	CBG 2450 FO	CBG 2450 / 1700 FO
Capacity (L)	1030	1170	1280	1370	1695
Width (mm)	1850	2100	2300	2450	2450
Teeth	7	8	9	9	11 + 4
Weight (kg)	636	686	728	750	870

Machine compatibility					
Reference	790303	790305	790307	790309	52549810
MLT 625	x				
MLT 630 <i>NewAg</i>		x	x	x	
MLT 635 <i>NewAg</i>				x	x
MLT 730 <i>NewAg</i>		x	x	x	
MLT-X 732				x	
MLT 733 <i>NewAg</i>				x	x
MLT-X 735				x	x
MLT 737 <i>NewAg</i>				x	x
MLT 741 <i>NewAg</i>				x	x
MLT-X 741				x	x
MLT 840				x	x
MLT 940 <i>NewAg</i>				x	x
MLT 1040				x	x
MLA-T 533			x	x	

MANDATORY MACHINE EQUIPMENT: 



ENVIRONMENT GRAB BUCKET



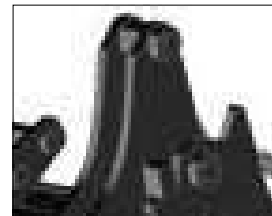
- Increased capacity for a massive work output in waste handling applications (density <1).
- Increased water capacity to handle bulk materials.
- Welded blade on grab available for paper handling applications (contact MANITOU).
- 500HB bolted cutting edge to work on concrete, asphalt etc.
- WB: welded plate on grabs' teeth



Standard spill guard



Strong teeth



Mechanical rotation stops

	CBG 2450 / 1600 EN	CBG 2450 / 1600 EN WB	CBG 2480 / 2200 EN
Capacity (L)	1568	1568	2200
Width (mm)	2450	2450	2480
Teeth	10	10	5
Weight (kg)	926	947	1350

Machine compatibility			
Reference	52000563	52000766	790657
MLT 635 <i>NewAg</i>	x		
MLT 733 <i>NewAg</i>	x		
MLT 737 <i>NewAg</i>	x		
MLT 741 <i>NewAg</i>	x		
MLT 840	x		
MLT 845 H	x	x	
MLT 961			x
MHT 790			x

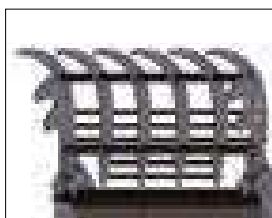
MANDATORY MACHINE EQUIPMENT:



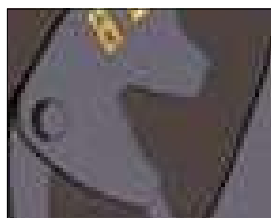
HIGH CAPACITY AGRICULTURAL GRAB BUCKET



- THE grab bucket for maximum work output.
- Increased capacity for a massive work output in agricultural applications (density <1).
- Increased struck capacity (1500l) to handle cereals and other bulk materials.



Grab-integrated spill guard



Improved material grip on sides & top



Mechanical rotation stops

	CBG 2480 / 2000 MS	CBG 2480 / 2600 MS
Capacity (L)	2000	2600
Width (mm)	2480	2480
Teeth	6	7
Weight (kg)	1225	1357

Machine compatibility		
Reference	790656	790658
MLT 840	x	
MLT 845 H	x	
MLT 961		x
MLT 1040	x	

MANDATORY MACHINE EQUIPMENT:



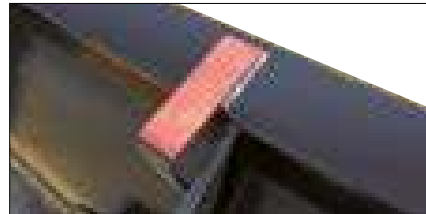
GENERAL PURPOSE BUCKET



- Handling material with a density $\leq 2100 \text{ kg/m}^3$.
- Perfect for the handling of sand, gravel, earth, cereals etc.
- (1): Optional bolt-on wear plate for better longevity.
- (2): Dedicated versions for machines equipped with an integrated side shift (TSDL).
- (3): Version dedicated to MT 420 with skid steer carriage option.



Strong & very resistant structure



Level plate for more accuracy



	CBR 600 / 1500	CBR 730 / 1850	CBR 780 / 1950	CBR 850 / 2100	CBR 900 / 2250	CBR 1000 / 2450	CBR 1000 / 2500
Capacity (L)	583	735	778	843	904	990	1000
Width (mm)	1500	1850	1950	2100	2250	2450	2500
Option	(3)	(1)			(2)	(1) (2)	(1) standard
Weight (kg)	274	318	328	358	360	381	664

Machine compatibility							
Reference	570614	571831	570613	653047	653749	654716	(1) : 744050
	(1) : 52584881 (3) : 52000783	(1) : 52000369	N/A	N/A	(2) : 52000365	(1) : 52000370 (2) : 52000366	N/A
MLT 625		x					
MLT 630 <i>NewAg</i>				x	x		
MLT 635 <i>NewAg</i>						x	
MLT 730 <i>NewAg</i>				x	x		
MLT-X 732						x	
MLT 733 <i>NewAg</i>						x	
MLT-X 735			x		x	x	
MLT 737 <i>NewAg</i>						x	
MLT 741 <i>NewAg</i>						x	
MLT 840						x	
MLT 845						x	
MLT 940 <i>NewAg</i>						x	
MLT 1040						x	
MLT 961							x
MLA-T 533						x	
MT 420	x						
MT 625		x					
MT 733 Easy						x	
MT 933 Easy						x	
MT 1033 Easy					x	x	
MT 1135						x	
MT 1335						x	
MT 1440			x		x	x	
MT 1840					x	x	
E-RECO					921281	921282	
MRT Easy					x = 925903	x = 925904	
MRT Privilege +					x	x	
MRT 3255						x	

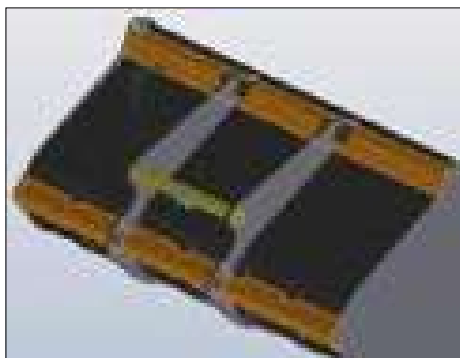
MANDATORY MACHINE EQUIPMENT: ✕



GENERAL PURPOSE BUCKET MHT VERSIONS



- High-resistance general purpose buckets adapted to the power of MHT heavy telehandlers.
- Strong attachments for a long lasting life.
- (1): 500HB bolted wear plate.



Strong structure with strengtheners



Reinforced sides

	CBR 1000 / 2500	CBR 1500 / 2500	CBR 2000 / 2500 LDR MHT
Capacity (L)	1000	1500	2000
Width (mm)	2500	2500	2482
Bolted wear plate	Standard	Standard	Standard
Weight (kg)	664	766	926

Machine compatibility			
Reference	744050	732625	N/A
	N/A	N/A	N/A
MHT-X 860	x	x	
E-RECO	939165	939166	52000532
MHT 790	x	x	
MHT 1490	x	x	
MHT 10130			x
MHT 10180			x
MHT 10230			x

MANDATORY MACHINE EQUIPMENT: ✕

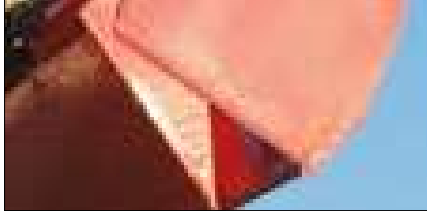


SHEAR BUCKETS



- Suitable for any type of silage.
- Very clean silage pit face avoiding secondary fermentation.
- Bucket-type bottom- ideal for the handling of mineral feed & other materials.
- Strong boxed structure + massive use of noble steel.





Lateral shear for easy cutting operations



Bolt-on teeth- perfect cut & easy maintenance

	SHB 2200 / 1650	SHB 2400 / 1800
Capacity (L)	1650	1800
Width (mm)	2254	2454
Forward reach / depth (mm)	1295	1295
Weight (kg)	892	1080

Machine compatibility		
Reference	52000386	52000387
MLT 635 <i>NewAG</i>	x	
MLT-X 732	x	
MLT-X 735	x	
MLT 737 <i>NewAG</i>		x
MLT 741 <i>NewAG</i>		x
MLT 840		x
MLT 940 <i>NewAG</i>		x
MLT 1040		x
MLA-T 533	x	

MANDATORY MACHINE EQUIPMENT: 



E-Reco, an attachment recognition system for greater simplicity











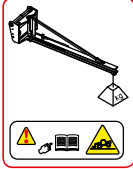

Manitou is offering, as standard, the attachment-recognition system on its new-generation of rotary telescopic trucks MRT EASY and MRT PRIVILEGE +.

The system uses RFID radio-identification technology, very widely used in industry and retail.

This autonomous technique can remotely recover and record data. The machine detects the attachment at the head of the boom, analyses its data and directly proposes the corresponding working configuration (working envelope + movement speed + safety).

This technology provides the load chart in real time, taking into account the rotation angle of the turret and the position of the machine's stabilisers and in accordance with the mobile crane standard.

TABLE SYMBOL

	No predisposition required
	Hydraulic line
	Return piping to hydraulic oil tank
	Electric predisposition
	Platform predisposition
	Tyre handler, cylinder handler predisposition
	Please contact your Manitou subsidiary (special solution request required)
	Round bale
	Square bale
	Wrapped bale
	Suspended load : read user manual
	Machine equipped with attachment recognition system



Agriculture



Construction



Industry